



29A Mullins Road Wodonga VIC

3 1 2

Located across from the thriving new Riverside Estate this neat home offers plenty for its affordable price. The many features include-

Big kitchen with gas hot plates and electric oven

Generous size lounge

Main bedroom with large walk in robe

Comforts of ducted gas heating and evaporative cooling

Tandem carport that extends to a paved entertaining area, plus a lock up garage/workshop

For investors previously let at \$275 per week

A country atmosphere close to the Kiewa river, Lake Hume and more

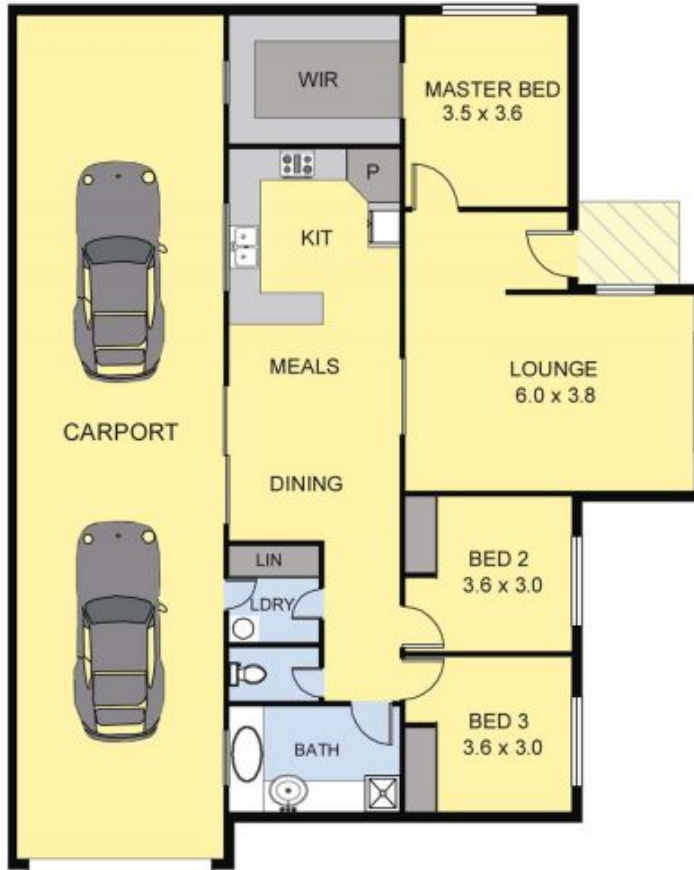
Price : \$ 218,000

Land Size : 496 sqm

View : <https://www.wodongarealestate.com.au/sale/vic/north-eastern/wodonga/residential/house/5837072>



Clinton Harvey
0260 561 888



Scale in metres. Indicative only. Dimensions are approximate.
 All information contained herein is gathered from sources we believe to be reliable. However we cannot guarantee its accuracy and interested persons should rely on their own enquiries.

AREA

LIVING	: 120.00 sq.m
CARPORT	: 75.00 sq.m
TOTAL	: 195.00 sq.m



29 A MULLINS