



**3 Warsaw Crescent Wodonga VIC**

3 1 2

Featuring easy living with polished floorboards plus ducted heating and cooling throughout this affordable home could not be more comfortable.

The other appointments include-

Three bedrooms all with built in robes and ceiling fans

Low maintenance 615m<sup>2</sup> allotment

So close to central Wodonga and all facilities

Expected rental return \$270 - \$290 per week

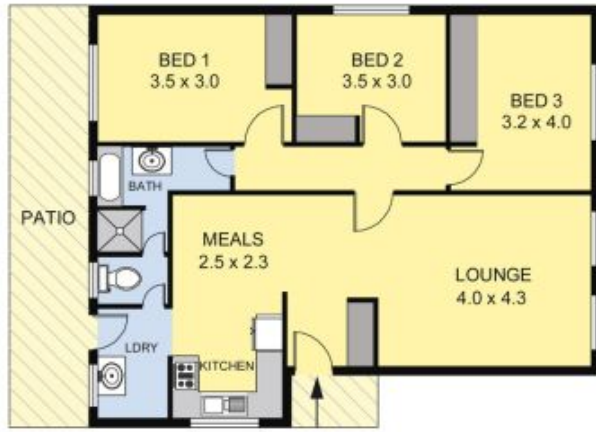
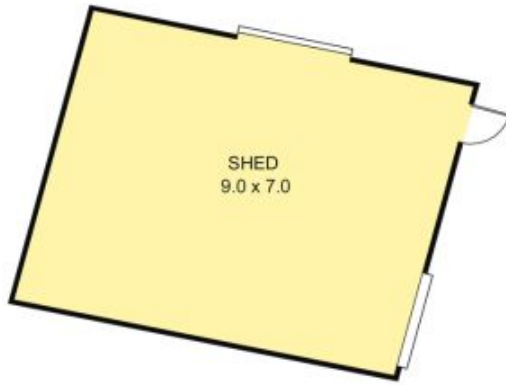
**Price** : \$ 237,000

**Land Size** : 615 sqm

**View** : <https://www.wodongarealestate.com.au/sale/vic/north-eastern/wodonga/residential/house/5837073>



**Clinton Harvey**  
0260 561 888



Scale in metres. Indicative only. Dimensions are approximate.  
 All information contained herein is gathered from sources we believe to be reliable however we cannot guarantee its accuracy and interested persons should rely on their own enquiries.

AREA	
LIVING	: 100.00 sq.m(Approx)
SHED/PATIO	: 80.00 sq.m(Approx)



## 3 WARSAW CRESCENT