

12 Strickland Street Wodonga VIC

4 2 2

In popular Riverside Estate, this beautiful 26sq under roof home will not disappoint.

This four bedroom home is close to the reserve, walking tracks and the Kiewa River.

Master bedroom with walk in robe and en-suite. Bedrooms 2,3 and 4 all with built in robes.

Ducted heating and cooling

Open plan kitchen, family and dining room with a walk in pantry, stainless steel 900mm cook top and oven.

Main family room opening onto the alfresco area.

With a second living area there is plenty of room for the family.

The double lock up garage has both internal and external access.

This turn key package will come complete with fencing and landscaping.

Price : \$ 400,000

Land Size : 618 sqm

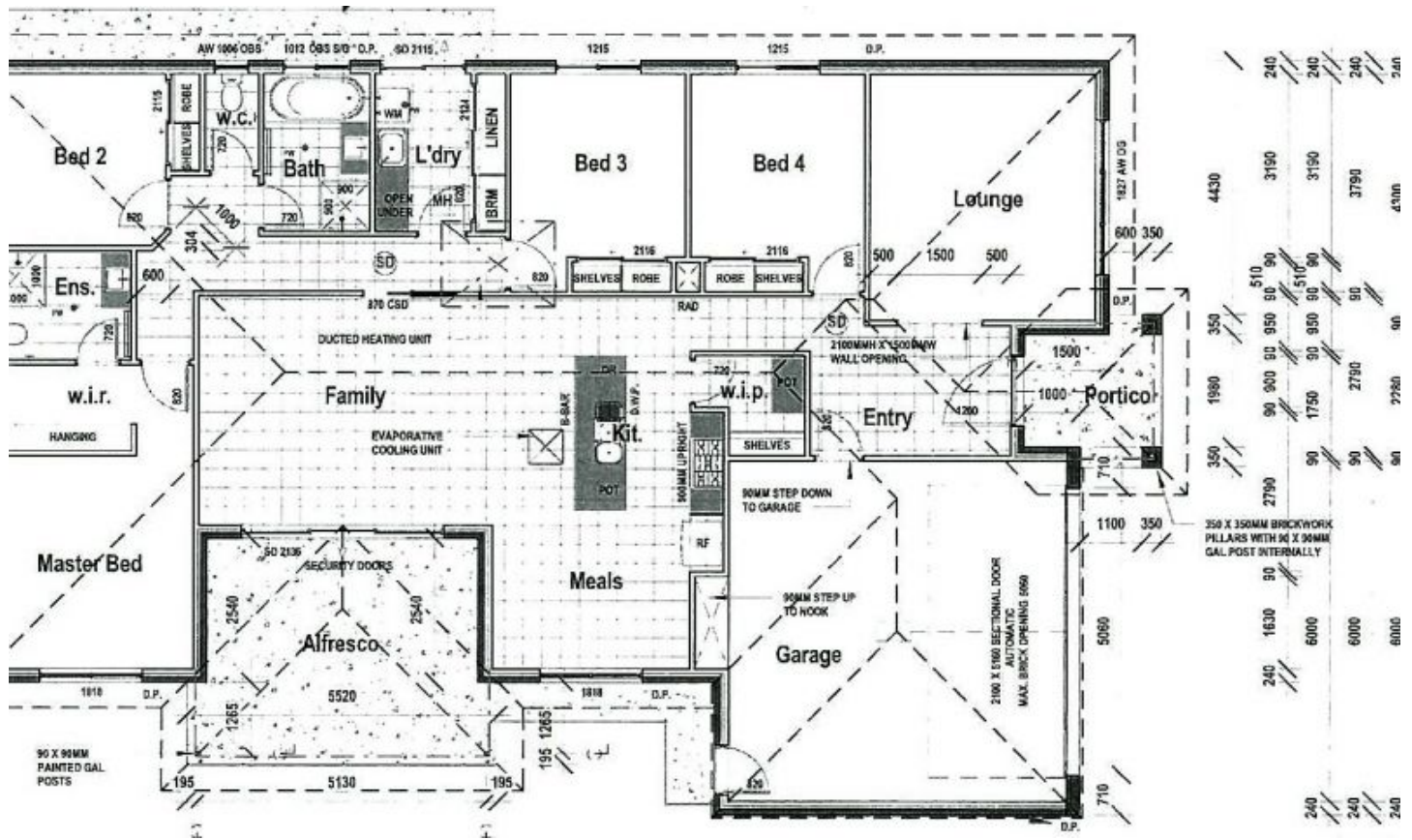
View : <https://www.wodongarealestate.com.au/sale/vic/north-eastern/wodonga/residential/house/5837082>



Margy Meehan
0260 561 888



Vanessa Meehan
0260 561 888



4430	4430	4430	4430	4430	4430
350	350	350	350	350	350
1980	1980	1980	1980	1980	1980
90	90	90	90	90	90
900	900	900	900	900	900
90	90	90	90	90	90
1750	1750	1750	1750	1750	1750
50	50	50	50	50	50
2790	2790	2790	2790	2790	2790
90	90	90	90	90	90
6000	6000	6000	6000	6000	6000
240	240	240	240	240	240
1630	1630	1630	1630	1630	1630
90	90	90	90	90	90
510	510	510	510	510	510
3190	3190	3190	3190	3190	3190
240	240	240	240	240	240
3790	3790	3790	3790	3790	3790
240	240	240	240	240	240
4300	4300	4300	4300	4300	4300