



**5/3 Kingfisher Drive Wodonga VIC**

2 1 1

The rear unit on the allotment with remote and internal access to the lock up garage, this home does deliver with peace and privacy.

The many features include-

Large open plan living/dining

Gas kitchen with space to install a dishwasher

Gas wall furnace heating, wall unit refrigerated cooling and split system

Beautiful paved entertaining area, no lawns to mow!

For investors expected rental return of \$210-230 per week

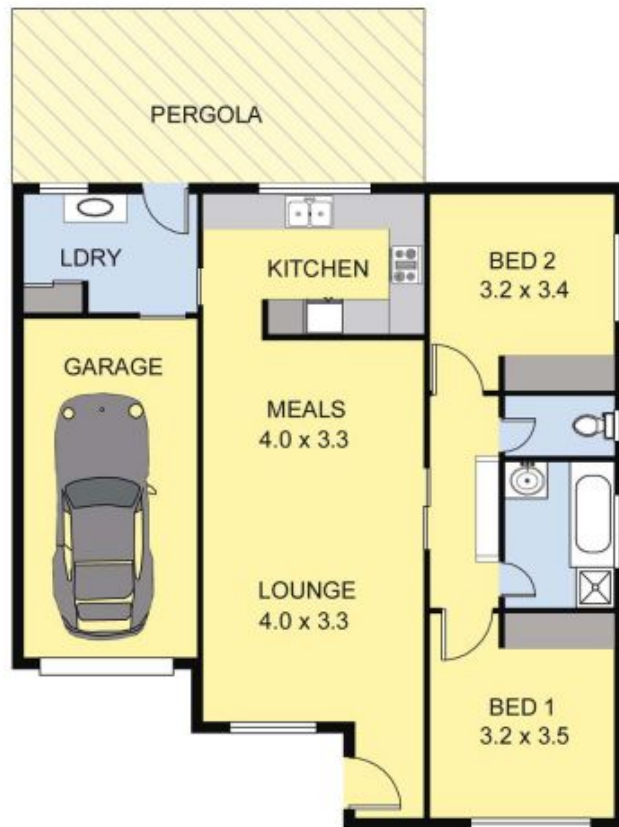
Popular West Wodonga location within easy access to most facilities

**Price** : \$ 195,000

**View** : <https://www.wodongarealestate.com.au/sale/vic/north-eastern/wodonga/residential/unit/5837083>



**Clinton Harvey**  
0260 561 888



Scale in metres. Indicative only Dimensions are approximate.  
 All information contained herein is gathered from sources we believe to be reliable. However we cannot guarantee its accuracy and interested persons should rely on their own enquiries.

**AREA**

LIVING : 80.00 sq.m

GARAGE /PERGOLA: 42.00 sq.m

TOTAL : 122.00 sq.m



# 5/3 KINGFISHER