



2/26 Thomas Mitchell Drive Wodonga VIC

2 1 2

This terrific location allows you to walk to absolutely everything and offers a sought after remote double garage with internal and rear access.

Built with a lasting quality and designed with totally low maintenance in mind, allowing you to lock up and leave anytime.

The many features include-

Large kitchen with gas hot plates and dishwasher

Two good size bedrooms with built in robes and ceiling fans

Comforts of gas heating and ducted cooling

Paved outdoor area

Currently let at \$260 per week or can be purchased with vacant possession

Rare to the market place, don't delay

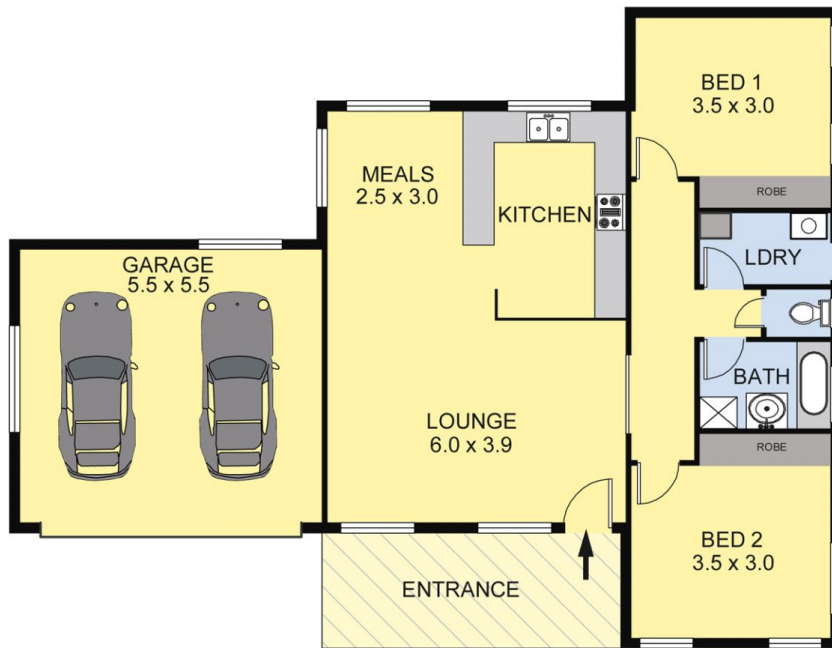
Price : \$ 268,000

Land Size : 236 sqm

View : <https://www.wodongarealestate.com.au/sale/vic/north-eastern/wodonga/residential/unit/5837094>



Clinton Harvey
0260 561 888



Scale in metres. Indicative only. Dimensions are approximate.
 All information contained herein is gathered from sources we believe to be reliable. However we cannot guarantee its accuracy and interested persons should rely on their own enquiries.

AREA	
LIVING	: 100.00 sq.m(Approx)
GARAGE/ENTRANCE:	40.00 sq.m(Approx)
TOTAL	: 140.00 sq.m(Approx)



26/2 THOMAS MITCHEL