



### 3 McCarthy Street Wodonga VIC

4 2 2

Situated in White Box Rise Estate within close proximity to a shopping precinct and the city centre, this near new home of 26 squares under roof is ready for its new owners. Set on a 720m<sup>2</sup> approx. block, quality built by Peter Bowen Homes in 2011 and tastefully finished in a modern neutral palette.

Consisting of four generous bedrooms, master suite with walk in robe and ensuite. Entertaining is a breeze in the choice of two large living domains, via a formal lounge / parents retreat and an informal area adjacent to the well thought out kitchen. With a host of features to boast about, pot draws, walk in pantry, stainless steel appliances and a large fridge space.

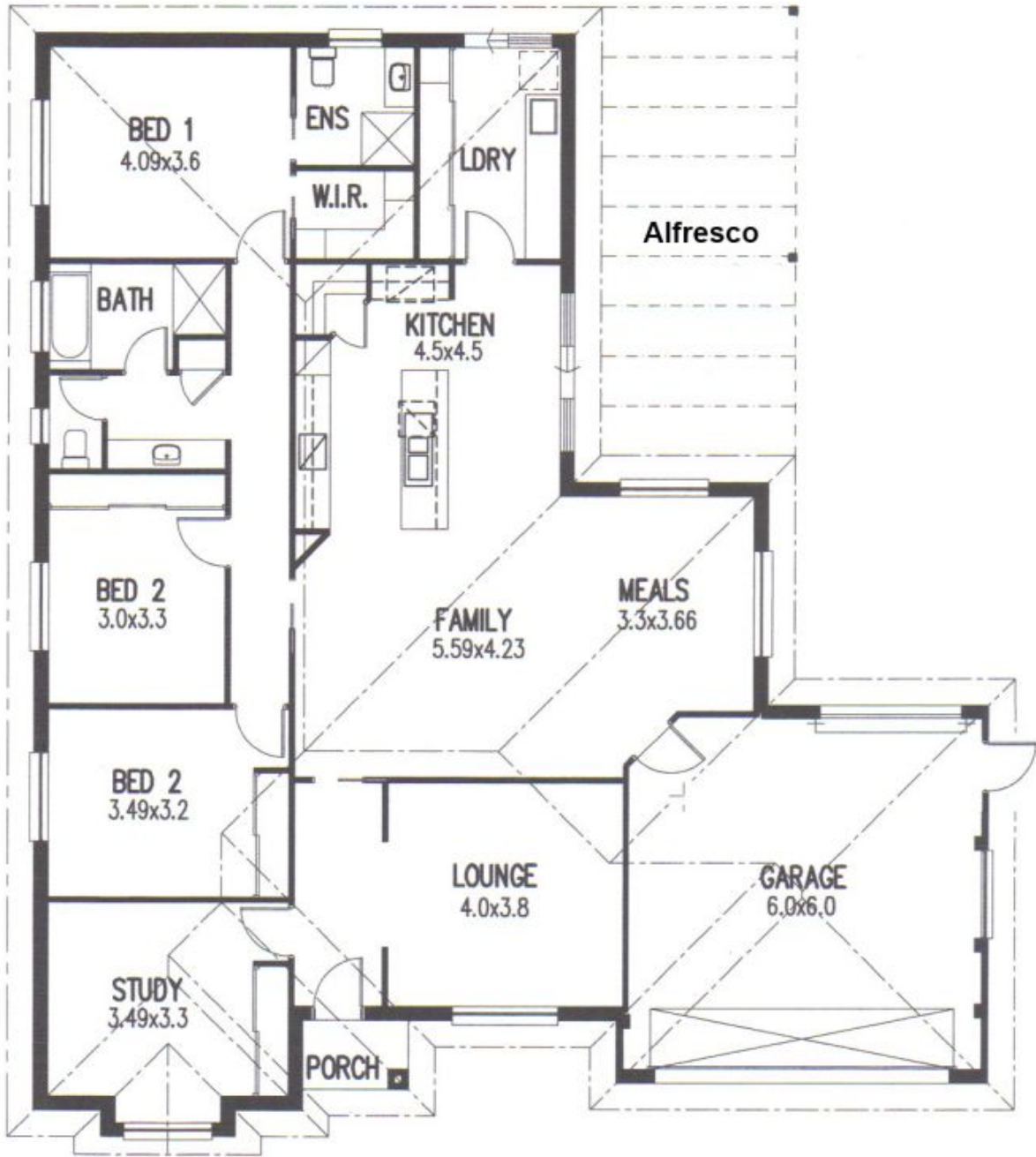
The oversized north facing alfresco area offers views across Wodonga and the garden, with plenty of room for the kids play equipment.

This home has a strong rental history and can be

**Price** : \$ 400,000

**Land Size** : 720 sqm

**View** : <https://www.wodongarealestate.com.au/sale/vic/north-eastern/wodonga/residential/house/5837102>



**FLOOR PLAN 1:100**