

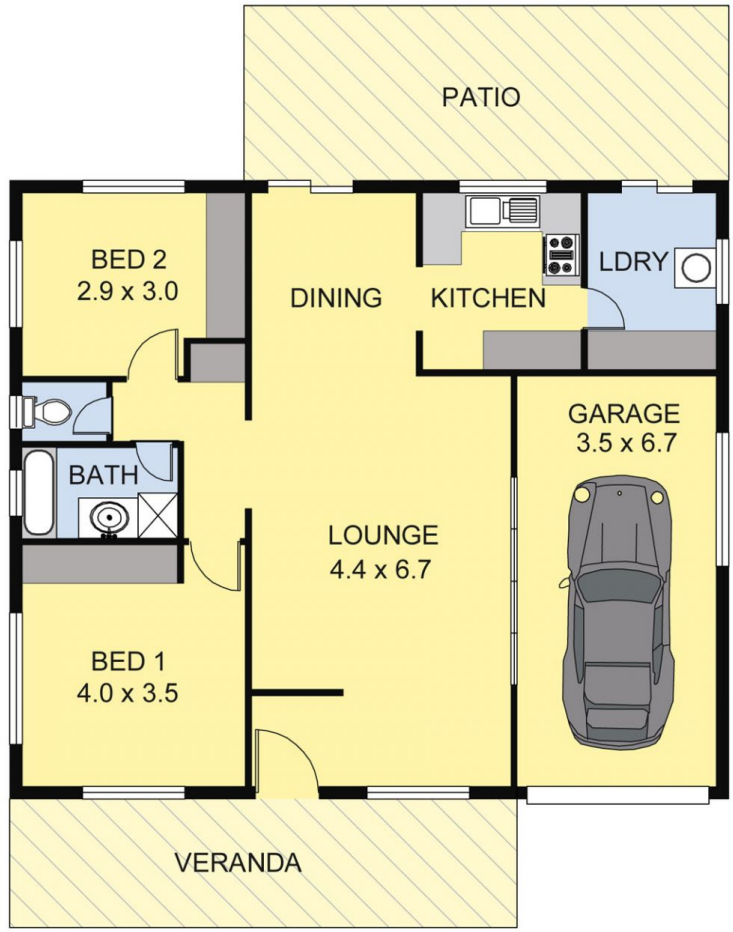


2 Rosemont Court Wodonga VIC

2 1 1

This delightful town house is the perfect opportunity for the Investor, downsizer or alternatively a great place to start. The property offers a generous main living area, with dining & kitchen that overlooks the outdoor courtyard space. You can be sure to be kept comfortable all year round with ducted evaporative cooling & gas wall furnace, & single lockup garage. Windows at the front of the property feature roller shutters to help keep you cool, plus the low maintenance yard offers a space to dable without the hardwork.

Price : \$ 239,000
Land Size : 406 sqm
View : <https://www.wodongarealestate.com.au/sale/vic/north-eastern/wodonga/residential/townhouse/5837109>



Scale in metres. Indicative only. Dimensions are approximate. All information contained herein is gathered from sources we believe to be reliable. However we cannot guarantee its accuracy and interested persons should rely on their own enquiries.

AREA	
LIVING	: 90.00 sq.m(Approx)
VERANDA/PATIO/GARAGE	:140.00 sq.m(Approx)
TOTAL	:230.00 sq.m(Approx)



2 ROSEMONT CT