



43 Klinberg Court Albury NSW

3 2 2

Situated on the highest elevation of Albury and nestled against the green belt of Nail Can Hill, offering unsurpassed 280 degree views, this executive home is built over three levels maximising the views from every vantage point.

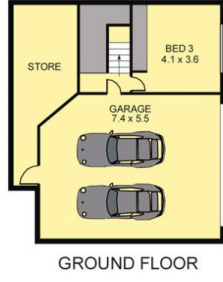
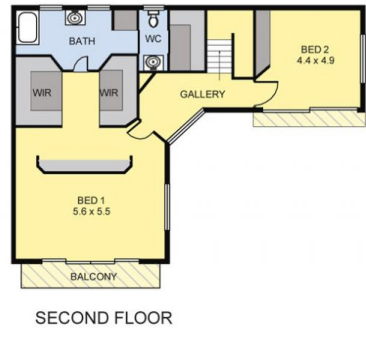
Offering three stunning and private bedrooms plus a study, with built in cabinetry.

The master suite on the top level features a private balcony, dressing room and " His & Her" wardrobes and a generous modern ensuite with a full bath.

On the second level, the entertaining level, is the main internal living area, the kitchen and two amazing entertaining terraces.

To the East, capturing the glorious sunrise is a paved terrace and to the West , is the opulent gas heated lap pool and swim spa, enclosed to provide your very own "Day Spa" retreat, adjacent to this another stunning alfresco

Price : \$ 665,000
Land Size : 750 sqm
View : <https://www.wodongarealestate.com.au/sale/nsw/murray-region/albury/residential/house/5837111>



Scale in metres. Indicative only. Dimensions are approximate. All information contained herein is gathered from sources we believe to be reliable. However, we cannot guarantee its accuracy and interested persons should rely on their own enquiries.

AREA	
GROUND FLOOR	: 90.00 sq.m(Approx)
FIRST FLOOR	: 305.00 sq.m(Approx)
SECOND FLOOR	: 110.00 sq.m(Approx)
TOTAL	: 505.00 sq.m(Approx)



43 KLINBERG COURT