



**8 Lachlan Court Wodonga VIC**

4 2 1

Situated at the end of a quiet court, this wonderful West Wodonga location is highly sought after being so close to Wodonga's newly developed CBD, the Hume freeway, shops, cafes and more.

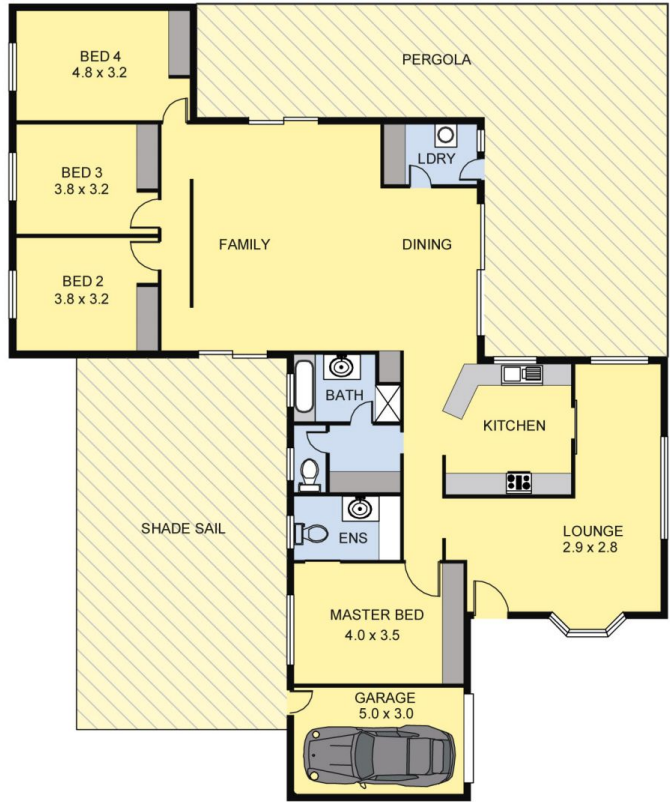
Approx 1,390m<sup>2</sup> of land this brick home also has over 21 squares of living and dual outdoor entertaining areas, meaning there is plenty of room for the family inside and out!

- \* Four LARGE bedrooms with built in robes and ceiling fans, master with ensuite
- \* Open plan living plus second lounge with bay window
- \* Neat kitchen with gas cooking and ample amounts of cupboard and bench space
- \* Full bathroom including bath
- \* Ducted heating and refrigerated cooling for year-round comfort

**Price** : \$ 361,000  
**Land Size** : 1390 sqm  
**View** : <https://www.wodongarealestate.com.au/sale/vic/north-eastern/wodonga/residential/house/5837113>



**Tom Sanderson**  
**0260 561 888**



Scale in metres. Indicative only. Dimensions are approximate.  
 All information contained herein is gathered from sources we believe to be reliable. However we cannot guarantee its accuracy and interested persons should rely on their own enquiries.

AREA	
LIVING	: 200.00 sq.m(Approx)
PERGOLA/SHADE SAIL/ GARAGE:	140.00 sq.m(Approx)
TOTAL	: 340.00 sq.m(Approx)



# 8 LACHLAN COURT



Land Size 1462 sqm Approx

SITE PLAN



Scale in metres. Indicative only. Dimensions are approximate. All information contained herein is gathered from sources we believe to be reliable. However we cannot guarantee its accuracy and interested persons should rely on their own enquiries.



8 LACHLAN COURT