



**15 Birkdale Terrace Wodonga VIC**

4 2 2

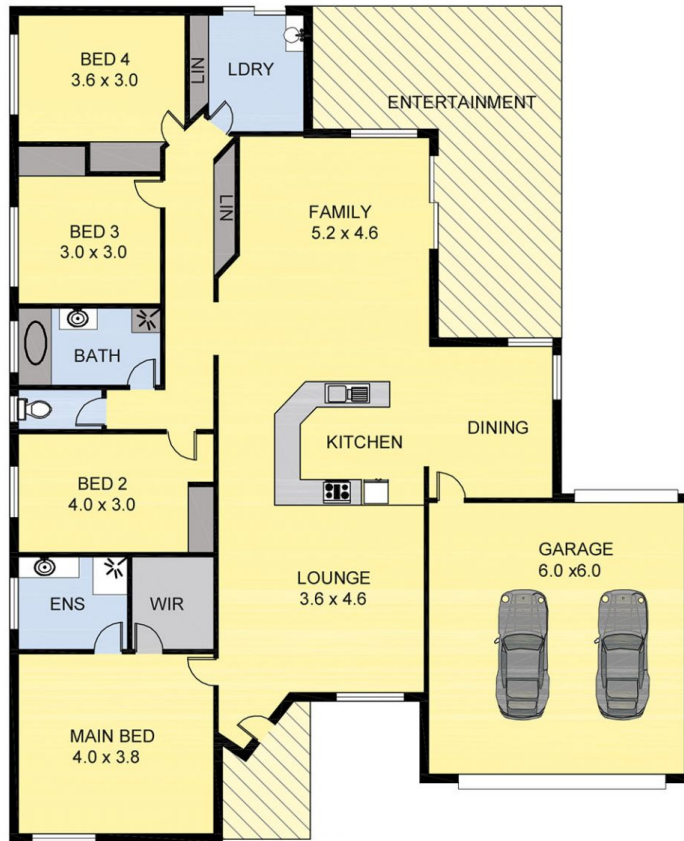
The sun filled spacious open plan living space inside extends to an attractive outdoor entertaining area outside with a good size open backyard and beautiful rolling green hills in the backdrop. Featuring a quiet and safe area with excellent neighbours the many features include-

- Large separate formal lounge
- Main bedroom with en-suite and walk in robe
- Comforts of gas ducted heating and evaporative cooling
- Double garage with internal, remote and rear access
- Low maintenance gardens on 657m2 allotment
- Well built by Dennis family homes in approximately 2004
- Easy access to the Wodonga Golf Course & more

**Price** : \$ 373,000  
**Land Size** : 765 sqm  
**View** : <https://www.wodongarealestate.com.au/sale/vic/north-eastern/wodonga/residential/house/5837274>



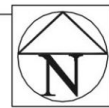
**Clinton Harvey**  
**0260 561 888**



Scale in metres. Indicative only. Dimensions are approximate. All information contained herein is gathered from sources we believe to be reliable. However we cannot guarantee its accuracy and interested persons should rely on their own enquiries.

AREA

LIVING	:	170.00 sq.m(Approx)
GARAGE	:	18.00 sq.m(Approx)
ENTRANCE/ENTERTAINMENT	:	30.00 sq.m(Approx)



15 BIRKDALE