



9 Conlan Circuit Wodonga VIC

3 1 1

This very tidy home appeals to a large part of the market including first home buyers, investors or down sizers. The quality features include-

Spacious and light north facing lounge

Kitchen/meals area with beautiful rich polished floorboards

Comforts of gas wall furnace and ducted evaporative cooling

Large covered outdoor entertaining area

Rear access to low maintenance 710m² allotment, space for a shed etc.

For investors previously let at \$265 per week with scope for improvement.

Handy Central/West location close to schools, shops, transport and more

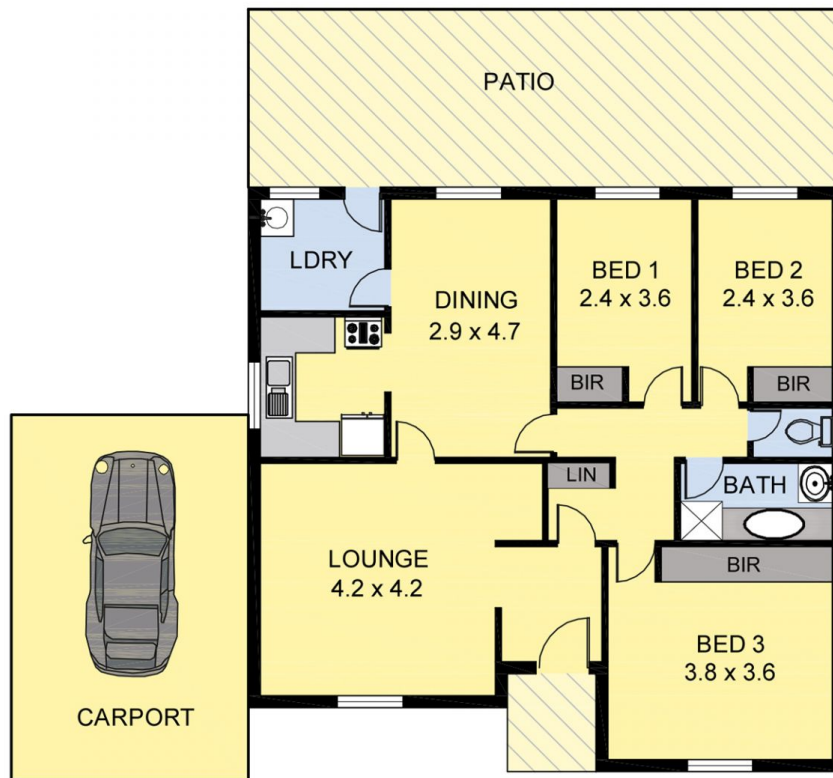
Price : \$ 242,000

Land Size : 710 sqm

View : <https://www.wodongarealestate.com.au/sale/vic/north-eastern/wodonga/residential/house/5837280>



Clinton Harvey
0260 561 888



Scale in metres. Indicative only. Dimensions are approximate.
 All information contained herein is gathered from sources we believe to be reliable. However we cannot guarantee its accuracy and interested persons should rely on their own enquiries.

AREA

| | | |
|---------|---|--------------------|
| LIVING | : | 90.00 sq.m(Approx) |
| CARPORT | : | 20.00 sq.m(Approx) |
| PATIO | : | 33.00 sq.m(Approx) |



9 CONLAN