



3/20 Thomas Mitchell Drive Wodonga VIC

2 1 1

The ample treats of central CBD living of cafes, evening dining, entertainment and a host of facilities are all at your fingertips at this sparkling and stylish townhouse.

A low maintenance lifestyle, the many contemporary appointments include-

Generous open plan living and dining with quality two pak kitchen, split system heating and cooling and additional downstairs toilet

Two upstairs bedrooms both with built-in robes and split systems

The secure paved courtyard provides easy outdoor entertaining with tidy gardens

Single lock-up garage with remote and internal access

Built and superbly finished by Taylor Made Homes in March 2009

For investors expected rental return of \$300 - \$320 per week

Price : \$ 305,000

Land Size : 131 sqm

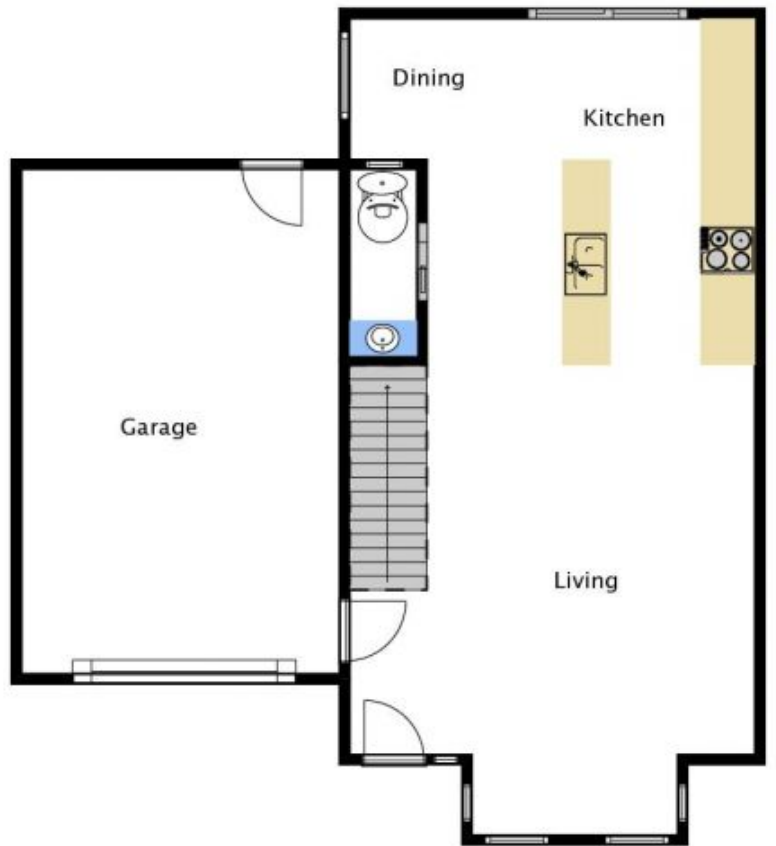
View : <https://www.wodongarealestate.com.au/sale/vic/north-eastern/wodonga/residential/townhouse/5837312>



Clinton Harvey
0260 561 888



First floor



Ground floor

3/20 Thomas Mitchell Drive, Wodonga