



1/81 High Street Wodonga VIC

Exciting opportunity to purchase a versatile commercial property so close to the superbly re-vamped railway hub and incredible ongoing development in central Wodonga. Set amongst a variety of very successful established businesses the features include-

Approximate size of 185m² with substantial excellent parking at rear via Church Street, main road High Street signage

Centred reception area, bar, separate storage area, single toilet plus shared extra toilets

Ducted reverse cycle air conditioning throughout, additional split system to reception

Formerly used as a restaurant - no kitchen, but all fittings in place

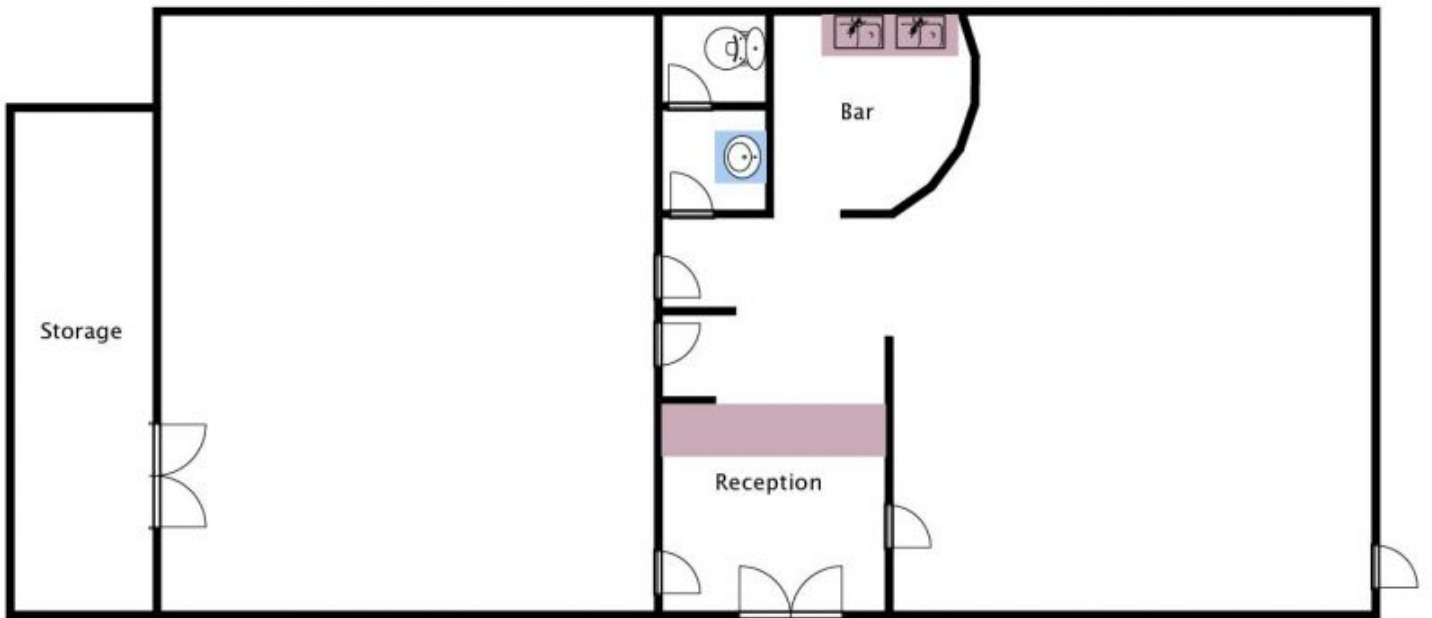
Close to public transport, easy access off freeway, only a short drive to Albury

For investors recently let at \$26,000 per annum plus

Price : \$ 257,000
Building Size : 185 sqm
View : <https://www.wodongarealestate.com.au/sale/vic/north-eastern/wodonga/commercial/retail/5837353>



Clinton Harvey
0260 561 888



1/81 High Street, Wodonga