



5 Sorrel Court Baranduda VIC

4 2 2

Beautifully situated in Baranduda, this superb family home offers comfortable living.

This home features four bedrooms, master with ensuite and walk in robe, formal lounge, spacious open plan living, casual dining and family area. Entertain year round with an undercover alfresco area overlooking the established manicured gardens.

Set on a 962m² (approx.) allotment, the property also includes ducted heating and cooling, double garage with internal access, double side gates to a shed with roller door at the rear of the property.

Close to schools, general store and only a short drive to the Wodonga township.

Don't delay book your inspection today.

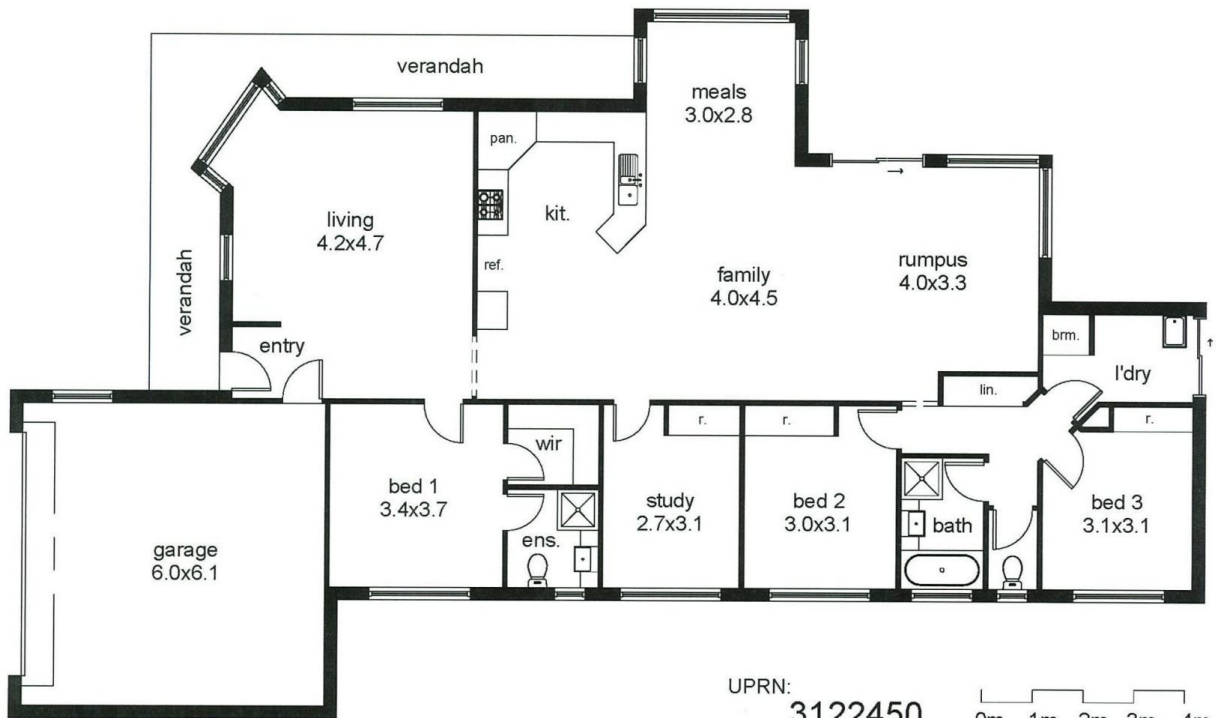
Price : \$ 391,000
Land Size : 962 sqm
View : <https://www.wodongarealestate.com.au/sale/vic/north-eastern/baranduda/residential/house/5837615>



Margy Meehan
0260 561 888



Vanessa Meehan
0260 561 888



UPRN:
3122450

