



**6/4 Weramu Street Tallangatta VIC**

2 1 1

A solid, neat and well maintained unit, in a complex of 6 close to the local High school, Golf Course and showgrounds, and only a 30 minute commute to Wodonga. A short walk to Lake Hume, the centre of Tallangatta and all local amenities, including the local hospital with elderly facilities attached.

Open plan layout with updated modern neutral tiles in kitchen and main thoroughfare areas, and carpet in bedrooms and main living area.

Offering two bedrooms, the main with built-in robes, and a split system in the main living area providing instant heating and cooling for year round comfort.

Kitchen with pantry, electric appliances and LG Dishwasher.

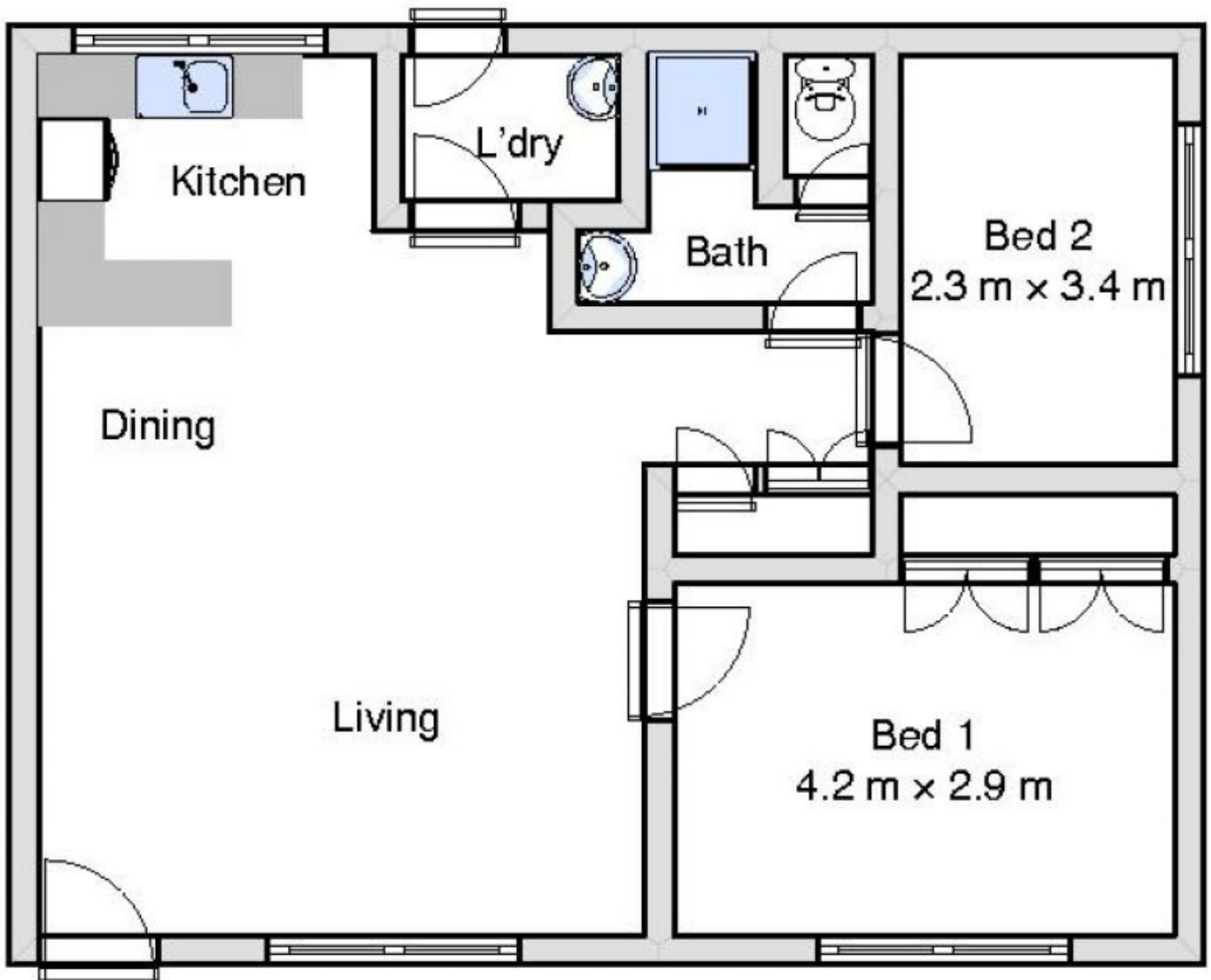
Allocated single carport located at the rear of the complex for car parking.

This unit is ideally situated close to everything and with a

**Price** : \$ 150,000  
**Land Size** : 158 sqm  
**View** : <https://www.wodongarealestate.com.au/sale/vic/north-eastern/tallangatta/residential/unit/5837718>



**Silviya Saric**  
**0260 561 888**



6/4 Weramu St, Tallangatta