



2/21 Emerald Avenue Wodonga VIC

2 1 1

Conveniently located close to Birallee Shopping Centre, Schools, Sports Stadium and Aquatic Centre this brick unit is positioned off the thoroughfare of the main street in a quiet court location.

Featuring two bedrooms both with built in wardrobes, a renovated bathroom with a bath and a shower, as well as a separate toilet.

The kitchen has ample cupboards and shelves, a pantry, gas cooktop and oven in a functional easy layout.

Three double linen cupboards give plenty of storage solutions.

Carpets in both living areas and walkways have all recently been recovered.

Separate laundry has access to the rear yard and carport.

The entire unit has been painted less than a year ago.

Gas wall furnace and air conditioning wall unit ensures comfort all year round.

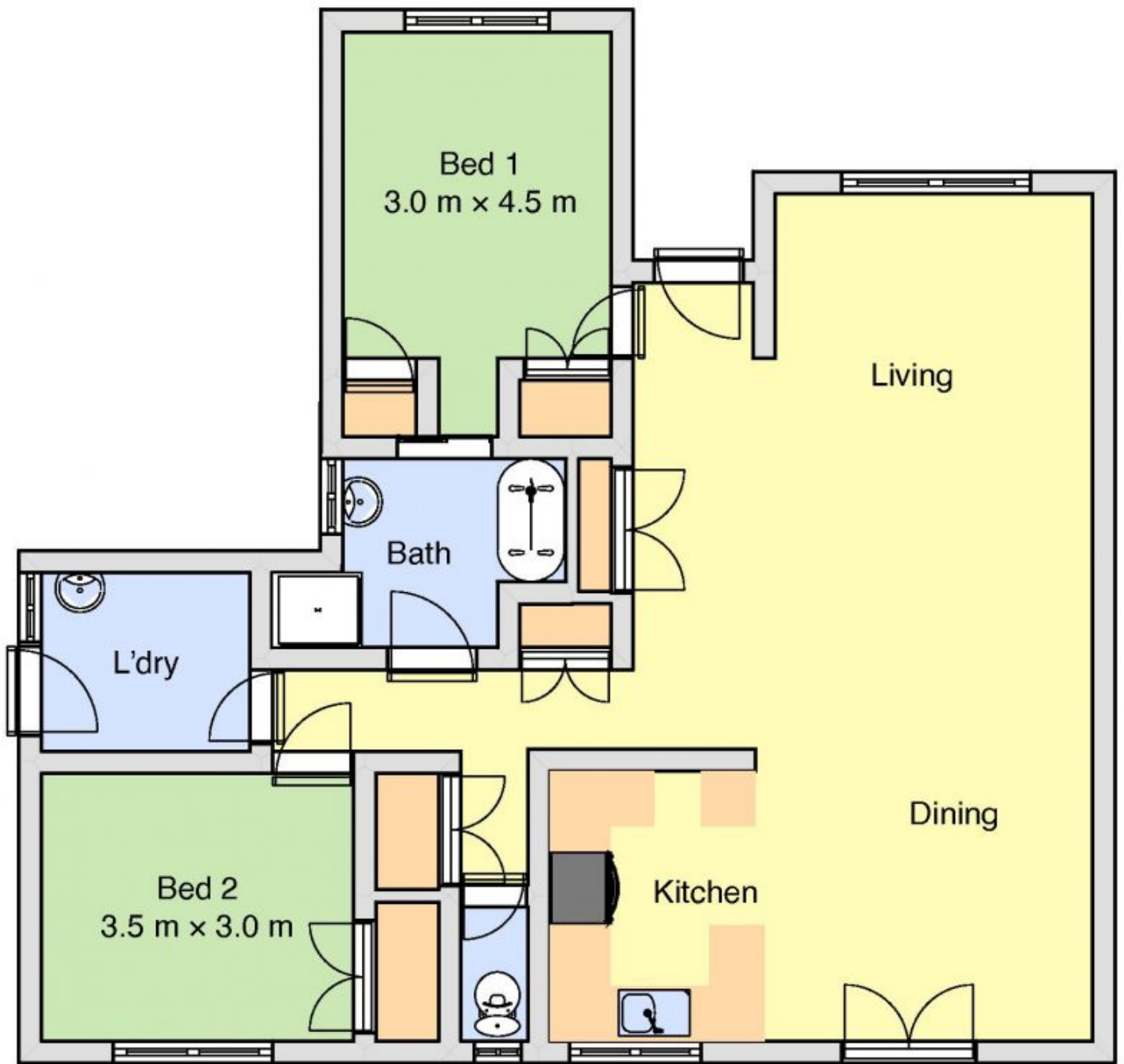
Price : \$ 225,000

Land Size : 189 sqm

View : <https://www.wodongarealestate.com.au/sale/vic/north-eastern/wodonga/residential/unit/5837752>



Silviya Saric
0260 561 888



2/21 Emerald Ave, Wodonga