



3 Kurewa Street Tallangatta VIC

2 1 1

If you are looking to own your first home, invest, retire or purchase a holiday home, this compact two bedroom home is worth considering.

Located in the rural township of Tallangatta which has approximately 1200 residents and only 30 minutes from Albury/Wodonga.

Close proximity to Falls Creek Snowfields and just 200m from the Hume Weir which is perfect for swimming, boating and fishing.

Terrific if you are looking for a lifestyle change, holiday retreat or somewhere to let the kids grow up and walk to school without the city hustle and bustle.

Features include:

Main bedroom with built in robes, ceiling fan and a split system for year round comfort.

Open plan kitchen, living and dining areas.

Kitchen with electric cooking.

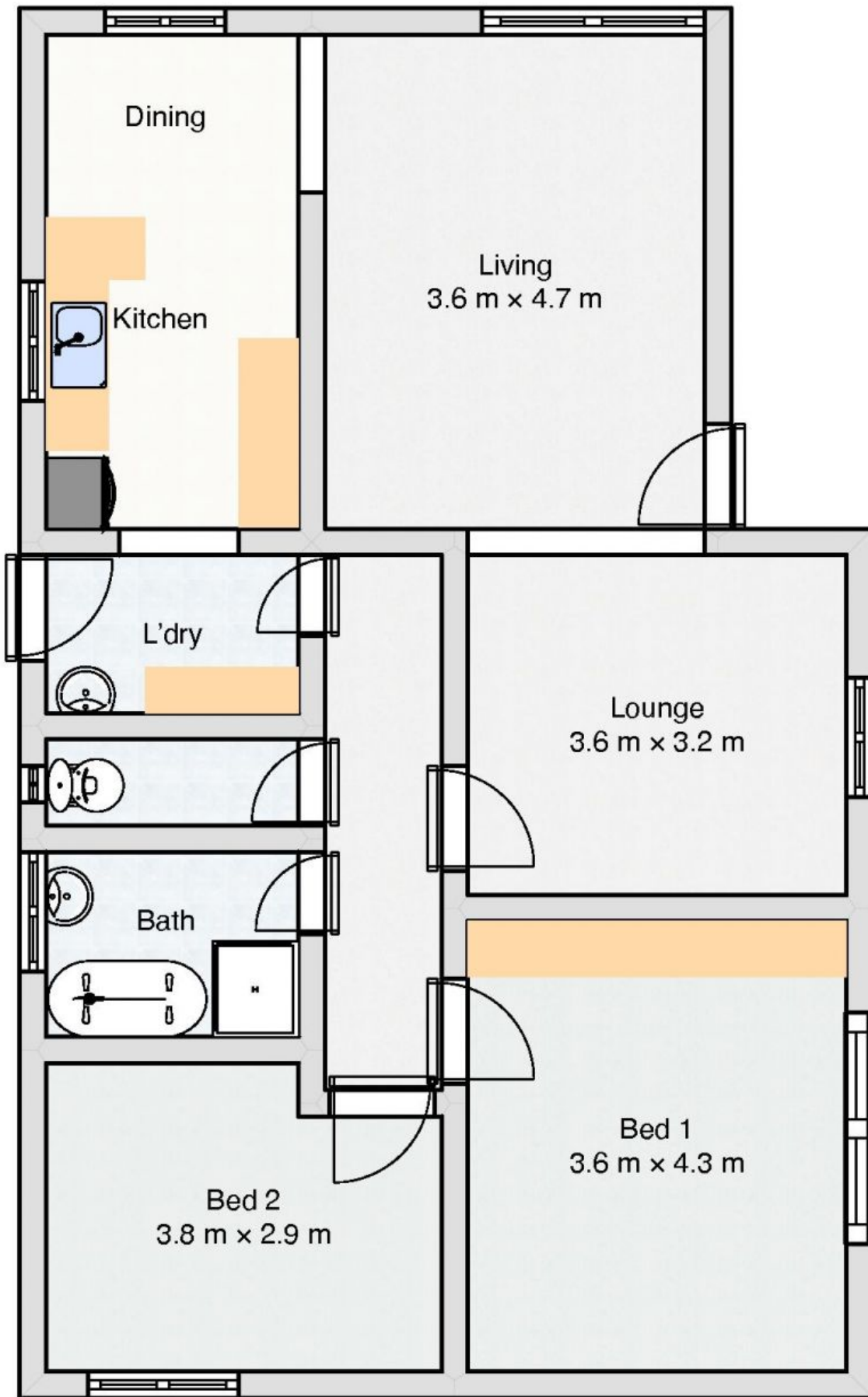
Price : \$ 175,000

Land Size : 600 sqm

View : <https://www.wodongarealestate.com.au/sale/vic/north-eastern/tallangatta/residential/house/5837853>



Silviya Saric
0260 561 888



3 Kurewa St, Tallangatta