

**6 Delaware Court Wodonga VIC**

5 3 4

**UNDER CONTRACT -**

With incredible views of surrounding hills and night lights this incredibly generous family home which sits on a 1022m<sup>2</sup> (approx.) block offers an abundance of space inside and out with the opportunity to run your business from home.

**Downstairs offers:**

A theatre/home office with own entry, bathroom, kitchenette/laundry and storage/ fifth bedroom.

**Upstairs comprises:**

Fantastic kitchen with an abundance of light, pot drawer storage and all the modern touches

Spacious separate lounge plus open plan family area with vaulted ceilings

Large main bedroom with ensuite, corner spa and walk in robe, three additional queen size bedrooms plus huge study

**Price** : \$ 485,000

**Land Size** : 1022 sqm

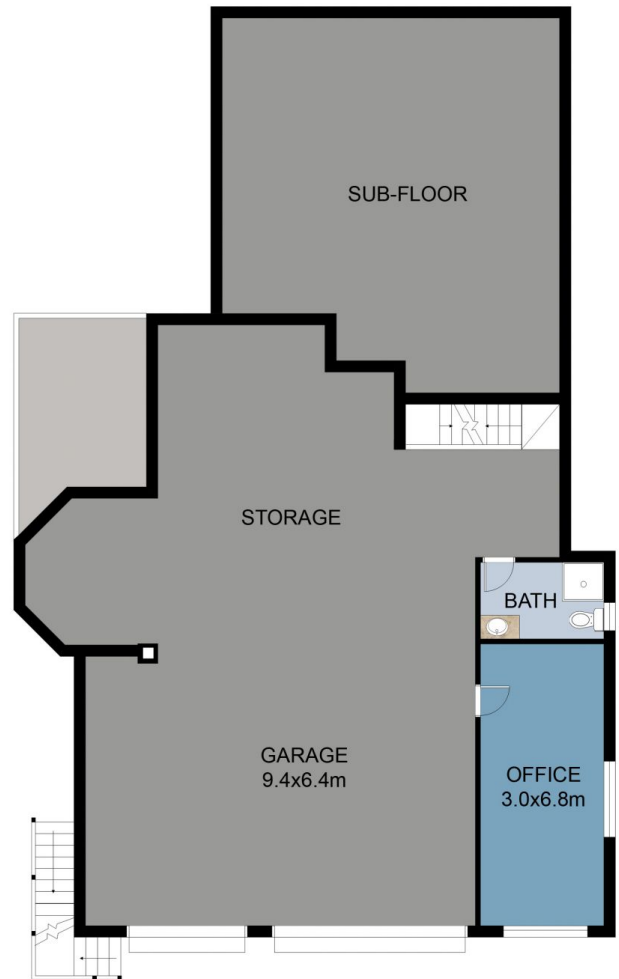
**View** : <https://www.wodongarealestate.com.au/sale/vic/north-eastern/wodonga/residential/house/5837890>



**Tom Sanderson**  
**0260 561 888**



LOWER FLOOR PLAN



GARAGE FLOOR PLAN

This floor plan including furniture, fixture measurements and dimensions are approximate and for illustrative purposes only.  
 Boxbrownie.com gives no guarantee, warranty or representation as to the accuracy and layout.  
 All enquiries must be directed to the agent, vendor or party representing this floor plan.

LIVING : 221.3m<sup>2</sup>  
 GARAGE : 18.6m<sup>2</sup>  
 VERANDAH : 32.2m<sup>2</sup>  
 TOTAL : 272.0m<sup>2</sup>

6 Delaware Court, Cambourne Park