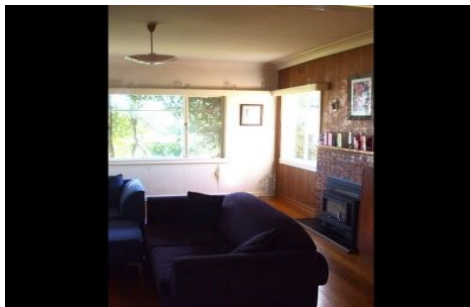
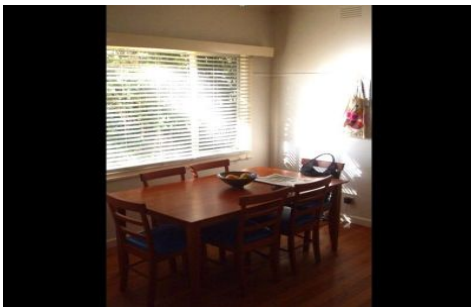




**wodonga real estate
bestagents**



6 Mitchell Street EBDEN VIC

2 1 1

This lovely 2 bedroom weatherboard home is located close to lake hume and near shops/fuel. Features 2 bedrooms with wardrobes, separate living and dining, polished floorboards, AC, wood heating, electric cooking, full bathroom, single lock up garage and big yard. Rare chance to secure lakeside accomodation.

View : <https://www.wodongarealestate.com.au/lease/vic/north-eastern/ebden/residential/house/5838431>



Mark Rosevear
0260 561 888