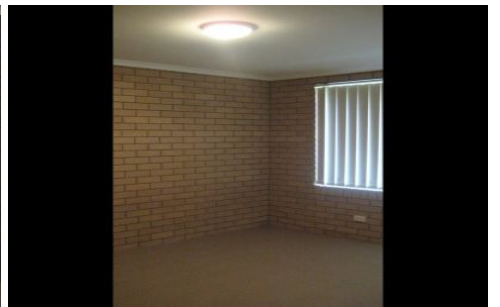




**wodonga real estate  
bestagents**



**15/607 Prune Street LAVINGTON NSW**

2 1 1

Renovated 2 bedroom townhouse, as new kitchen with electric cooking, open plan lounge and dining area, split system heating and cooling, built in robes in main bedroom, full bathroom, small storage shed and carport. Enter via Kaitlers Road.

**View** : <https://www.wodongarealestate.com.au/lease/nsw/murray-region/lavington/residential/unit/5838528>