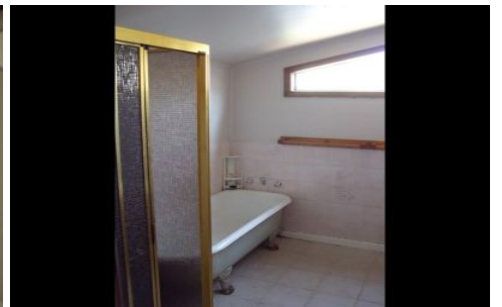




**wodonga real estate
bestagents**



38 Finch Street BEECHWORTH VIC

2 1 1

If you've ever wanted to live in a little cottage with a picket fence in a tree lined street then here's your chance. Steeped in history, this centrally located, 167 year old heritage listed 2 bedroom miner's cottage features built in robes to both bedrooms, open Kitchen / dining with gas heating, Wood heating plus split system heat / cool and ceiling fan in good size separate lounge, updated kitchen with electric cooking, renovated bathroom with claw foot bath, carport, storage and good size yard.

View : <https://www.wodongarealestate.com.au/lease/vic/north-eastern/beechnorth/residential/house/5838592>



Mark Rosevear
0260 561 888