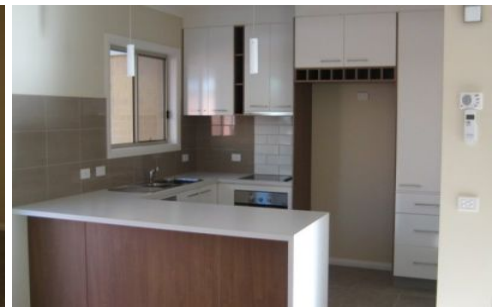
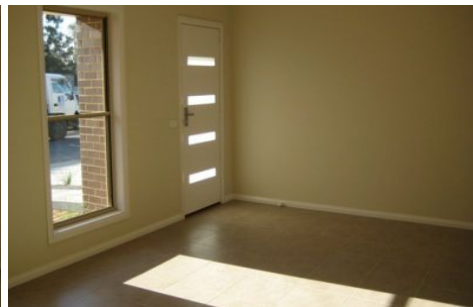




**wodonga real estate
bestagents**



8 Ethel Lane WODONGA VIC

2 1 1

As new 2 bedroom executive townhouse with ducted heating and cooling throughout, tiled open plan lounge and dining area, sleek kitchen with stainless steel appliances including dishwasher and electric cooking, built in robes, outdoor entertaining area, small enclosed courtyard and single lock up garage with remote and internal access.

View : <https://www.wodongarealestate.com.au/lease/vic/north-eastern/wodonga/residential/townhouse/5838883>