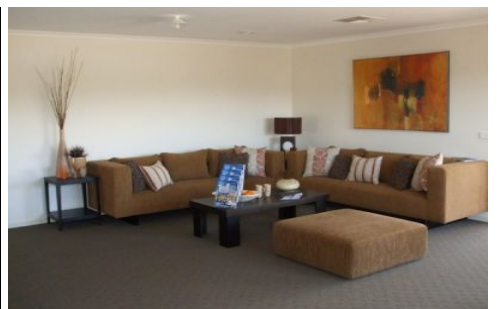
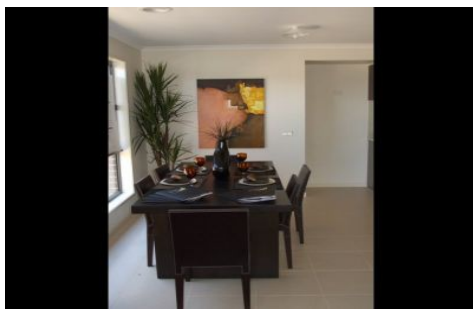




**wodonga real estate
bestagents**



95 Yarralumla Drive Wodonga VIC

4 2 2

Large 4 bedroom home with formal tiled entrance, ducted heating and cooling, separate formal lounge, spacious open plan dining and family area, sleek kitchen with stainless steel appliances and dishwasher, built in robes, ensuite, fantastic undercover deck entertaining area, and double lock up garage with automatic door and internal access into the home. (Enter via Whernside Drive)

View : <https://www.wodongarealestate.com.au/lease/vic/north-eastern/wodonga/residential/house/5839904>