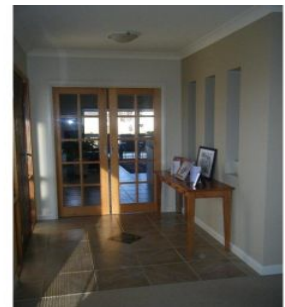




**wodonga real estate
bestagents**



48A Avondale Drive WODONGA VIC

4 2 2

Executive 4 bedroom home in popular Cambourne Park Estate with wonderful views. Home features ensuite off a massive master bedroom, 3 separate living areas with large pool table in one living area, ducted heating & cooling, ducted vacuuming, built in robes, dishwasher, spa bath, decked outdoor entertainment area, low maintenance gardens with zoned computerized sprinkler system, enclosed yard, large remote double lockup garage with internal access and large under house storage. A must to inspect!!

View : <https://www.wodongarealestate.com.au/lease/vic/north-eastern/wodonga/residential/house/5840051>



Mark Rosevear
0260 561 888