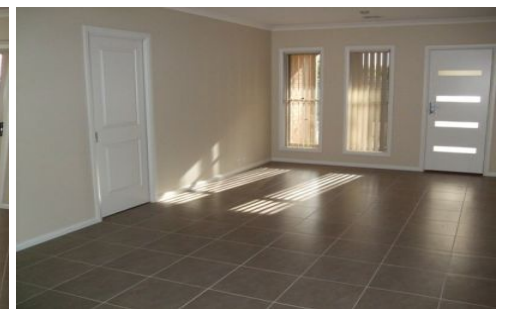
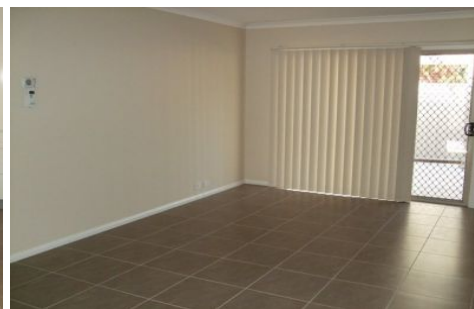




**wodonga real estate
bestagents**



10 Ethel Lane Wodonga VIC

2 1 1

Fantastic two bedroom townhouse with ducted heating and cooling throughout, tiled open plan dining and lounge area, sleek kitchen with stainless steel appliances including electric cooking and dishwasher, built in robes, outdoor entertaining area, small enclosed yard and single lock up garage with auto door and internal access. Great location in Central Wodonga with easy walking distance to CBD. No pets.

View : <https://www.wodongarealestate.com.au/lease/vic/north-eastern/wodonga/residential/townhouse/5840808>