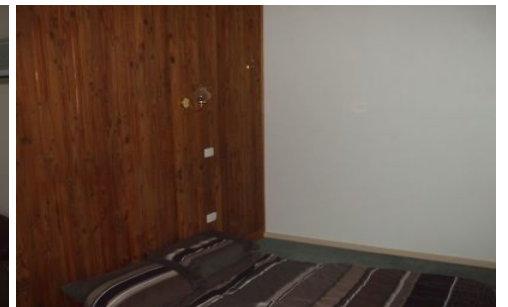
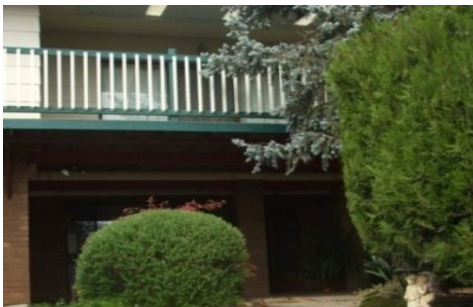




**wodonga real estate
bestagents**



13 Craig Drive Bellbridge VIC

4 2 1

Two-storey property located in popular Bellbridge featuring four bedrooms (two downstairs and two upstairs) three with built-in robes, study off balcony overlooking lake views, two split system heating and cooling units, two separate living areas, upstairs dining area, all electric kitchen with dishwasher upstairs, kitchenette downstairs, two bathrooms, single carport, storage.

View : <https://www.wodongarealestate.com.au/lease/vic/north-eastern/bellbridge/residential/house/5840826>



Donna Martin
0260 561 888