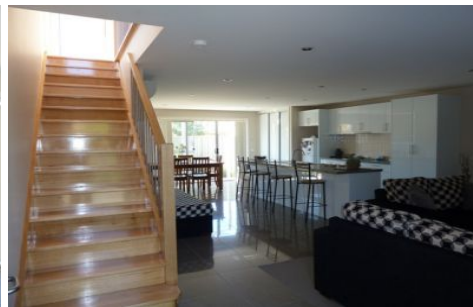




**wodonga real estate  
bestagents**



**3/20 Thomas Mitchell Drive Wodonga VIC**

2 1 1

Modern two storey two bedroom townhouse with split system heating and cooling, sleek kitchen with stainless steel appliances including dishwasher and gas cook top, tiled dining area and carpet lounge downstairs plus separate toilet, both bedrooms upstairs with two way bathroom and separate toilet, paved enclosed courtyard and single lock up garage with remote and internal access. Located in Central Wodonga within easy walking distance of CBD.

**View** : <https://www.wodongarealestate.com.au/lease/vic/north-eastern/wodonga/residential/townhouse/5840897>