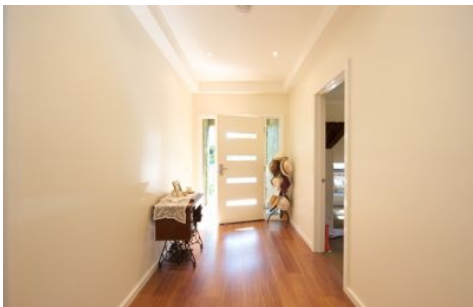




**wodonga real estate
bestagents**



368 Beechworth Road Wodonga VIC

4 2 2

Executive four bedroom family home located within walking distance to schools, shops and swimming pool. This property features, four double bedrooms master with walk in robe and en-suite , all other bedrooms with built-in robes, two living areas with a gorgeous all weather outdoor area, ducted heating and cooling throughout the property, low maintenance yard and double lock up garage with remotes and internal access. Available now.

View : <https://www.wodongarealestate.com.au/lease/vic/north-eastern/wodonga/residential/house/5841233>