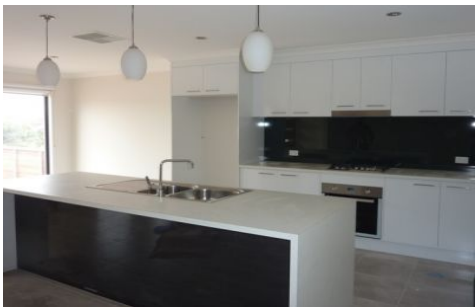




**wodonga real estate  
bestagents**



**1/687 Logan Road North Albury NSW**

**3  2  2 **

Well designed as new 3 bedroom townhouse located opposite the Hume Country Retirement Resort. Feature include open plan tiled living, modern kitchen with stainless steel appliances including gas cook top and dishwasher. The master bedroom has walk in robe and en suite plus built in robes to the other bedrooms, full bathroom, ducted heating and cooling throughout plus double lock up garage with internal and remote access. Outside you have a beautiful deck that overlooks the hills, with very low maintenance yard and no lawns to mow. No pets. Available 30/07/14

**View :** <https://www.wodongarealestate.com.au/lease/nsw/murray-region/north-albury/residential/unit/5841506>