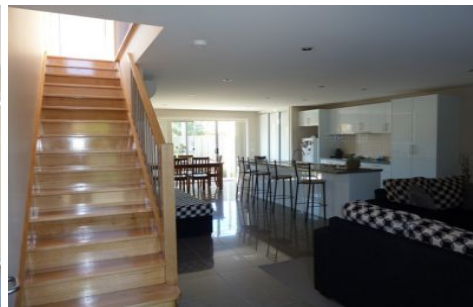




**wodonga real estate
bestagents**



3/20 Thomas Mitchell Drive Wodonga VIC

2 1 1

Modern two storey townhouse located in Central Wodonga within easy walking distance of CBD. Property features two bedrooms, split system heating/cooling, sleek kitchen with stainless steel appliances including dishwasher and gas cook top, tiled dining area and carpet lounge downstairs plus separate toilet. Both bedrooms are upstairs with access to a two-way bathroom and separate toilet. Paved enclosed courtyard and single lock up garage with remote and internal access.

View : <https://www.wodongarealestate.com.au/lease/vic/north-eastern/wodonga/residential/townhouse/5841626>