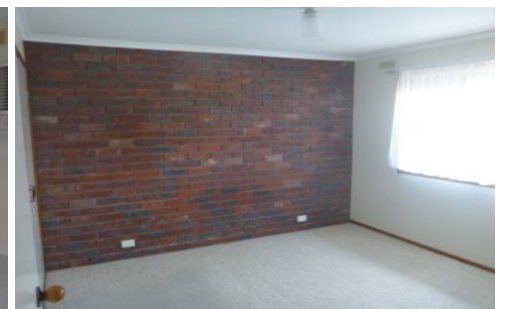




**wodonga real estate**  
**bestagents**



**5/344 Beechworth Road Wodonga VIC**

**2**  **1**  **2** 

Spacious, modern two bedroom unit located close to White Box Rise. Freshly painted with 2-way bathroom, lounge plus separate meals area, renovated kitchen, gas heating and cooking, air conditioner, small enclosed yard, single lock up garage with additional car parking space.

**View** : <https://www.wodongarealestate.com.au/lease/vic/north-eastern/wodonga/residential/unit/5841835>