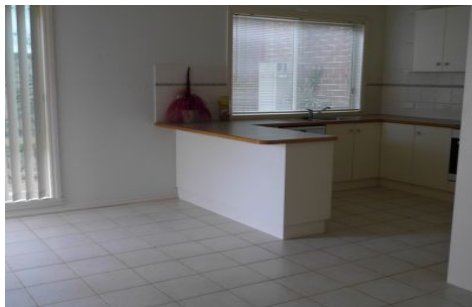




**wodonga real estate  
bestagents**



**2/26 Thomas Mitchell Drive Wodonga VIC**

2 1 2

Make this central, spacious two bedroom townhouse your home. Located a few blocks from main street Wodonga, this property offers large living area with gas heater and ducted cooling, bedrooms with built in robes and separate bathroom, toilet and laundry. The modern, generous kitchen offers ample storage and dishwasher and overlooks a lovely paved fernery. This private townhouse also has a large double lock up garage with remote and rear access.

**View** : <https://www.wodongarealestate.com.au/lease/vic/north-eastern/wodonga/residential/unit/5842049>



**Donna Martin**  
0260 561 888