



14 Osburn Street Wodonga VIC

Corner of Osburn Street and Queen Street, Wodonga.
Approx 2000m² of display yard & offices in absolute prime position.

New owners will negotiate the refurbishment of the 377m² office block / showroom to suit lessee's needs.

The building offers huge display area with reception, 8 offices, storage rooms, kitchen area with outdoor living area, amenities block including showers and disabled toilet, heating and cooling and wiring for computers etc

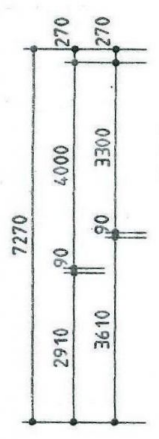
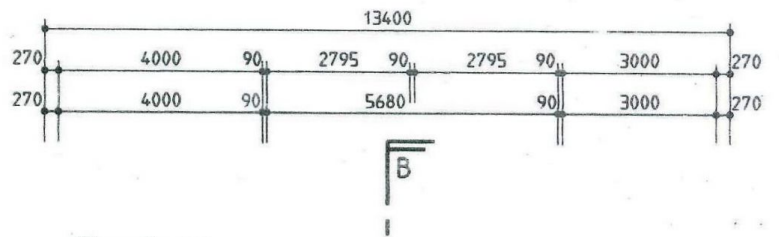
The huge display of 1600m² would suit Parking, Caravans, Boats, Cars, Farm and other Machinery and be fenced if required.

Rent \$32,000 plus G.S.T. and outgoings.

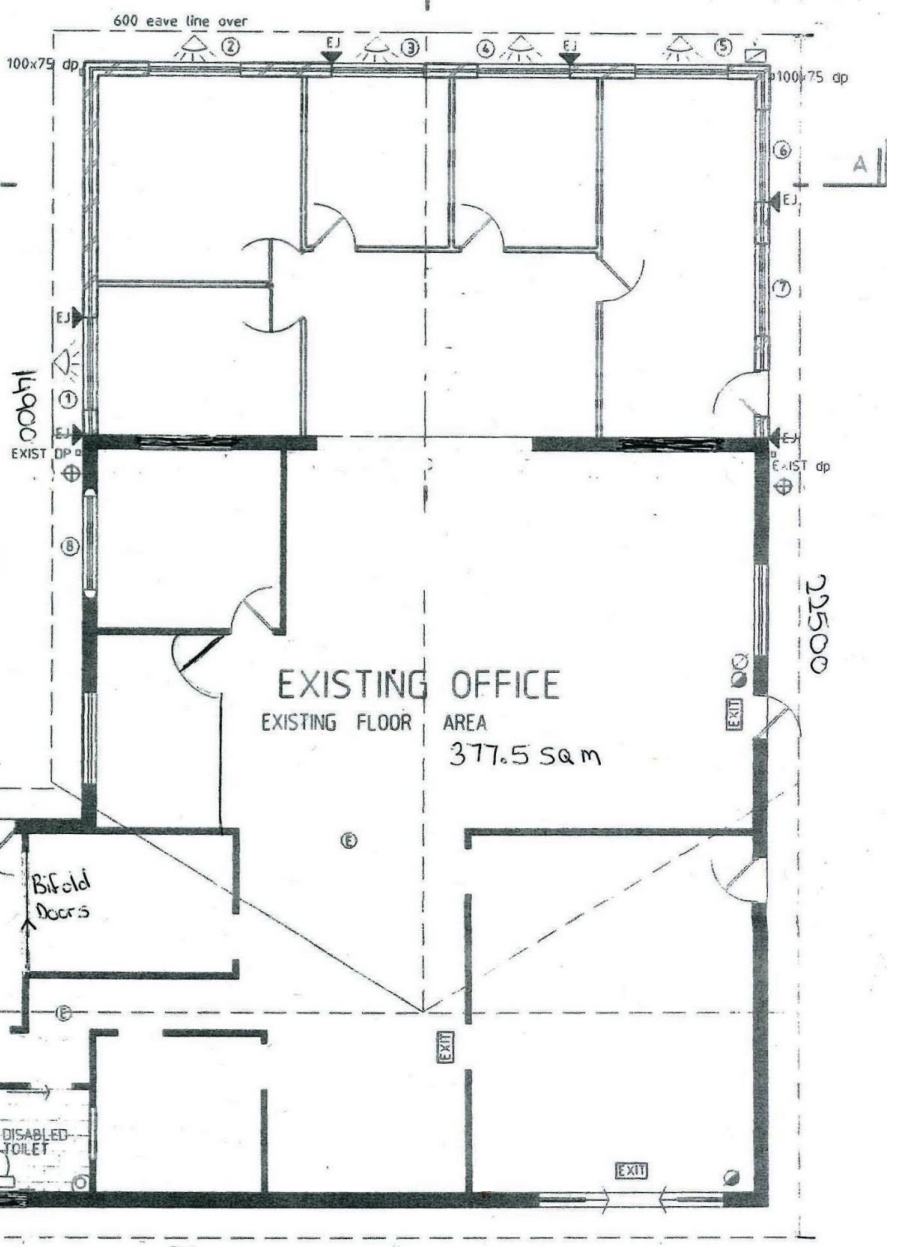
Building Size : 377 sqm

Land Size : 2000 sqm

View : <https://www.wodongarealestate.com.au/ease/vic/north-eastern/wodonga/commercial/offices/5842526>



FLOOR PLAN 1:100



009L