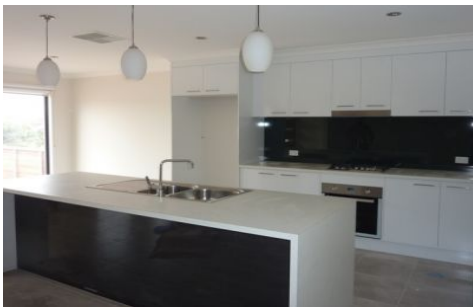




**wodonga real estate
bestagents**



1/687 Logan Road North Albury NSW

3 2 2

Well designed as new three bedroom townhouse located opposite the Hume Country Retirement Resort. Features include open plan tiled living, modern kitchen with stainless steel appliances including gas cook top and dishwasher. The master bedroom has walk in robe and ensuite and there are built in robes to the other bedrooms. Full bathroom, ducted heating and cooling throughout plus double lock up garage with internal access and remote. Outside you have a beautiful deck that overlooks the hills, with very low maintenance yard and no lawns to mow. Sorry no pets.

View : <https://www.wodongarealestate.com.au/lease/nsw/murray-region/north-albury/residential/unit/5842550>

***** BOOK AN INSPECTION ONLINE, IT'S EASY *****

If you're on www.wodongarealestate.com.au, simply click on the "BOOK INSPECTION" button. You can then either select an inspection time that suits you, or if no times are

<https://www.wodongarealestate.com.au>