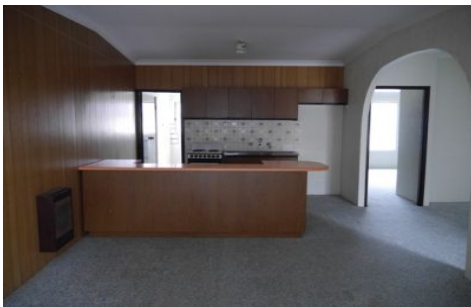




**wodonga real estate
bestagents**



6/420 Kotthoff Street Lavington NSW

2 1 1

Spacious two bedroom unit situated in a handy location close to Centro Lavington, amenities and public transport. There is a spacious lounge with separate meals area, a well appointed kitchen, full bathroom, built in robes, split system heating and cooling and an undercover carport behind a roller door. Situated in a quiet block. Sorry no pets.

View : <https://www.wodongarealestate.com.au/lease/nsw/murray-region/lavington/residential/unit/5842813>



Kayla Brown
0260 561 888