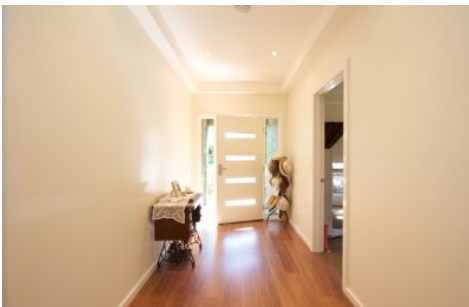




**wodonga real estate  
bestagents**



**368 Beechworth Road Wodonga VIC**

4 2 2

Well designed four bedroom home close to White Box Rise facilities. Features include high ceiling, floating timber floors, ducted heating and cooling, superb kitchen, master bedroom with walk in robe and ensuite, plus built in robes to the other bedrooms, 2 living areas, large all weather decked entertaining area, full bathroom, double garage with internal and remote access and low maintenance yard. NOTE: The home is wheelchair friendly.

**View :** <https://www.wodongarealestate.com.au/lease/vic/north-eastern/wodonga/residential/house/5843059>



**Donna Martin**  
0260 561 888