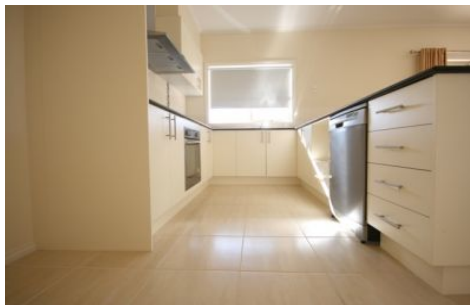




wodonga real estate
bestagents



47 Craig Circuit Wodonga VIC

4 2 2

Beautiful large 4 bedroom family home in lovely Leneva. The property is complete with a study, ensuite and walk in robe to master bedroom. The large open plan living area is overlooked by the kitchen and there is access through double sliding doors onto the back undercover BBQ area. There is also separate formal lounge room so that everyone has their own space. The three second bedrooms are a great size all with built in robes. Ducted heating and cooling, enclosed back yard and double lock up garage with remote and internal access.

View : <https://www.wodongarealestate.com.au/lease/vic/north-eastern/wodonga/residential/house/5843736>



Josh McClelland
0260 561 888