



**wodonga real estate  
bestagents**

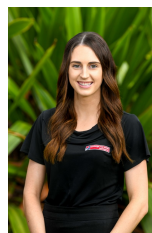


**61 Johnston Road Albury NSW**

4 2 2

This impressive and stylish family home located in Pemberton Park provides size, quality and easy living. Close to Albury Wodonga Private Hospital, medical clinics, parks, bus stops and schools. Features four generous sized bedrooms, master with walk in robe and en-suite, all other bedrooms with built in robes, main bathroom with double vanity, separate toilet and basin. Formal lounge room with dining room, family room overlooking all weather paved entertaining area, beautiful timber kitchen with dishwasher and plenty of cupboard space. Heating and cooling. Beautifully landscaped low maintenance gardens which backs onto parkland and double garage with internal access. Pets will be considered on application.

**View** : <https://www.wodongarealestate.com.au/lease/nsw/murray-region/albury/residential/house/5843929>



**Jessica Chalmers**  
**0260 561 888**