

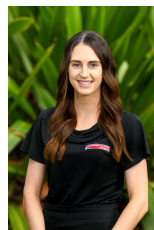


**3/35 Church Street Wodonga VIC**

Central two bedroom townhouse with built in robes, spacious lounge plus meals area, gas heating, air conditioning, full bathroom, dishwasher, small enclosed yard and a single lock up garage with internal access. Short walk to Sumption Gardens Park Lands, Shops and Schools. Sorry, no pets.

2 1 1

**View** : <https://www.wodongarealestate.com.au/lease/vic/north-eastern/wodonga/residential/unit/5844033>



**Jessica Chalmers**  
0260 561 888