



2/15 Shiels Court Wodonga VIC

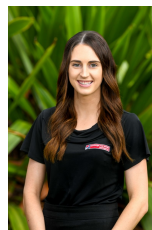
3 2 2

Tucked away comfortably at the end of a quiet court, this property is the ideal low maintenance home. Built in 2017 - this property has all the modern features you need!

Offering a low maintenance court yard, with a small entertaining area & double remote garage with internal access. The kitchen is complete with modern appliances & plenty of bench and cupboard space, gas heating and ducted cooling throughout for all year round comfort.

All three bedrooms have built-in-ropes with a walk-in-robe and en-suite to the master. This property is available now and won't last long! Book your inspection now to avoid missing out!

View : <https://www.wodongarealestate.com.au/lease/vic/north-eastern/wodonga/residential/unit/5844097>



Jessica Chalmers
0260 561 888