



**wodonga real estate
bestagents**

ATTENTION PLEASE:

As the COVID-19 virus restrictions continue, Wodonga Real Estate Best Agents are committed to protecting the health and safety of everyone who inspects our properties and have put a number of precautions in place.

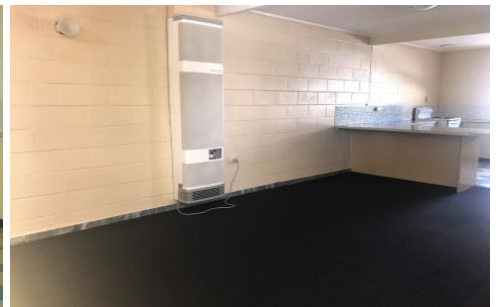
Please take note of the following:

- Only one person can enter the premises to inspect along with a Wodonga Real Estate representative.
- Our staff members will be wearing gloves and will administer you hand sanitizer upon entry.
- Staff members will open all doors for you and turn on all lights. Please refrain from touching any surfaces. If there's anything you wish to look at, please ask the staff representative.

If any of the following applies to you, please refrain from making an inspection appointment:

- Have you returned from overseas in the last 14 days?
- Do you currently have any cold or flu like symptoms?
- Have you been in contact with anyone suspected of carrying the COVID-19 Virus?

While our office is closed to the public, we are still here to help. Please don't hesitate to contact us by phone, e-mail or via our website. We thank you for your understanding and co-operation.



2/193 Plummer Street Albury NSW

2 1 1

COVID-19 - No Inspections - Apply online ONLY

Apply Via Our Website

Renting

Tenancy Forms

Tenancy Application Form

Positioned in one of Wodonga's most prestigious estates and immaculately presented is this brick home. Three well-sized bedrooms with built in robes. Master with access to the bathroom. Large Lounge room with plenty of natural sun light. Modern kitchen with gas cooking, stainless steel appliances and ample cupboard and bench space. Full bathroom.

Gas heating and split system cooling. Decked pergola with magnificent views of surrounding hills

Enclosed carport with roller door. Low-maintenance and secure backyard. Pets considered upon application.

View : <https://www.wodongarealestate.com.au/lease/nsw/murray-region/albury/residential/unit/5844283>



Nicki Waldron
0260 561888