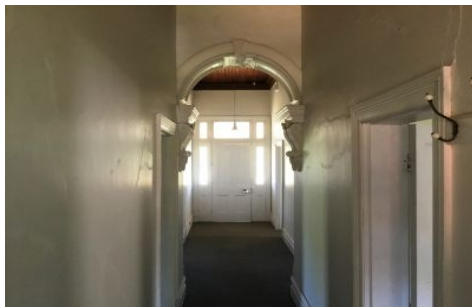




**wodonga real estate  
bestagents**



**70 Glenview Road Howlong NSW**

3 1 3

'Hallsville' is truly a property like no other available to rent at the moment. Located just 10 minutes from Howlong and twenty minutes from Albury. This secluded, grand, old, homestead is steeped in heritage, offering thee large bedrooms with 14 foot ceilings and ceiling fans in all rooms. Wood heating. The massive bathroom with large bath and shower, is equipped with a European laundry. Water is supplied via solar Bore, this water is drinkable. Large shedding and ample parking. Dog run and chicken pen. Graceful grounds and driveway with the usage of a dam and small acreage, perfect for a horse. Separate access.

**View** : <https://www.wodongarealestate.com.au/lease/nsw/murray-region/howlong/residential/house/5844342>



**Josh McClelland**  
0260 561 888