



**wodonga real estate
bestagents**

ATTENTION PLEASE

As the COVID-19 restrictions continue, Wodonga Real Estate Best Agents are committed to protecting the health and safety of everyone who inspects our properties and have put a number of precautions in place.

Please take note of the following:

- Number of people to enter the premises for inspection will depend on property size and state regulations.
- Our staff members will be wearing gloves and will administer you hand sanitiser upon entry.
- Staff members will open all doors for you and turn on all lights.
- Please refrain from touching any surfaces. If there's anything you wish to look at, please ask the staff representative.

If any of the following applied to you, please refrain from making an inspection appointment:

- Have you returned from overseas or Metropolitan Melbourne in the last 14 days?
- Do you currently have any cold or flu like symptoms?
- Have you been in contact with anyone suspected of carrying the COVID-19 virus?

We are open for business and here to help.
Please don't hesitate to contact us by phone, e-mail or via our website.
We thank you for your understanding and co-operation.

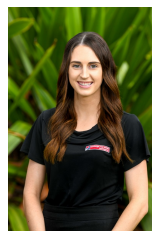


2/535 Margaret Place Lavington NSW

2 1 1

Beautiful two-bedroom home features built in robes in both bedrooms, spacious lounge room with high ceilings and exposed beams, gas heating and split system cooling. Functional kitchen with stainless steel appliances and separate meals area. Lovely enclosed private yard with small courtyard, single lock up garage. Pets on application

View : <https://www.wodongarealestate.com.au/lease/nsw/murray-region/lavington/residential/unit/5844372>



Jessica Chalmers
0260 561 888