



**wodonga real estate
bestagents**

ATTENTION PLEASE:

As the COVID-19 virus restrictions continue, Wodonga Real Estate Best Agents are committed to protecting the health and safety of everyone who inspects our properties and have put a number of precautions in place.

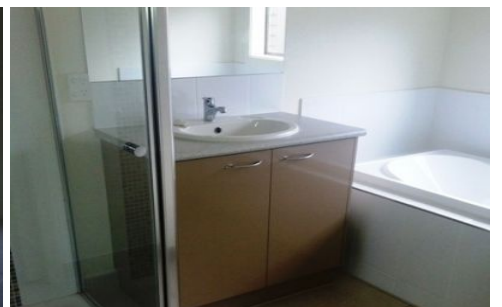
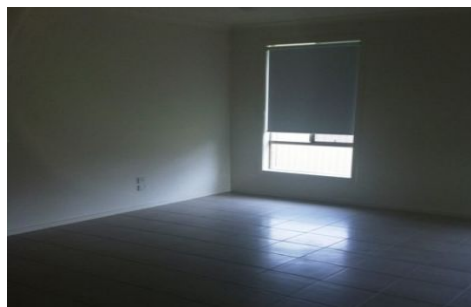
Please take note of the following:

- Only one person can enter the premises to inspect along with a Wodonga Real Estate representative.
- Our staff members will be wearing gloves and will administer you hand sanitizer upon entry.
- Staff members will open all doors for you and turn on all lights. Please refrain from touching any surfaces. If there's anything you wish to look at, please ask the staff representative.

If any of the following applies to you, please refrain from making an inspection appointment:

- Have you returned from overseas in the last 14 days?
- Do you currently have any cold or flu like symptoms?
- Have you been in contact with anyone suspected of carrying the COVID-19 Virus?

While our office is closed to the public, we are still here to help. Please don't hesitate to contact us by phone, e-mail or via our website. We thank you for your understanding and co-operation.



19 Mossgrove Way Beechworth VIC

4 2 2

ONLINE APPLICATIONS WILL BE REQUIRED PRIOR TO VIEWING TIMES BEING ARRANGED

This large family home will well suit a growing family. It offers four

bedrooms, main with ensuite and walk in robe, the other three with built in robes. A large tiled living area with modern, compact kitchen also compliments the house. Situated on an oversized flat block the Beechworth property also comprises of large double lock up garage with remote, ducted split system heating and cooling, and under covered outdoor alfresco area.

View : <https://www.wodongarealestate.com.au/lease/vic/north-eastern/beechworth/residential/house/5844381>



Donna Martin
0260 561 888