



47 Jillico Avenue Tallangatta VIC

3 2 2

A custom built brick home with spectacular water views overlooking Lake Hume at the top of the town in a popular Tallangatta location. Offering 2 open plan living zones and established trees and gardens.

This spacious brick veneer home was built in 1977 on a gentle, sloping 1,368m² approx. block over 2 levels.

The main ground level and entry is into the formal lounge, with gorgeous chandelier feature light, vaulted ceilings, combustion wood heater and floor to ceiling north facing windows to let the natural light in.

A well-designed Blackwood kitchen with Bosch dishwasher, excellent bench preparation space, electric ceramic cook-top, wall oven, slate floor tiles, and separate pantry, is designed to be facing out onto the open plan family room and meals area and showcasing the gorgeous water views over Lake Hume Dam.

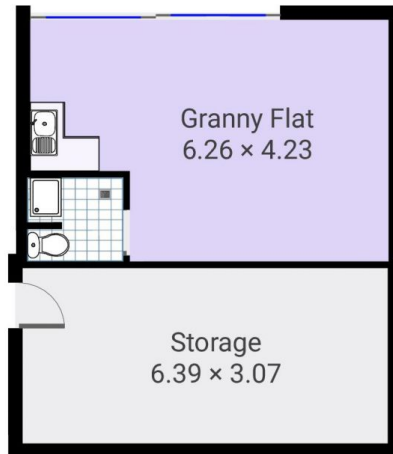
Double glass sliding doors lead out onto the tiled outdoor

Price : \$ 475,000
Land Size : 1368 sqm
View : <https://www.wodongarealestate.com.au/sale/vic/north-eastern/tallangatta/residential/house/6373196>

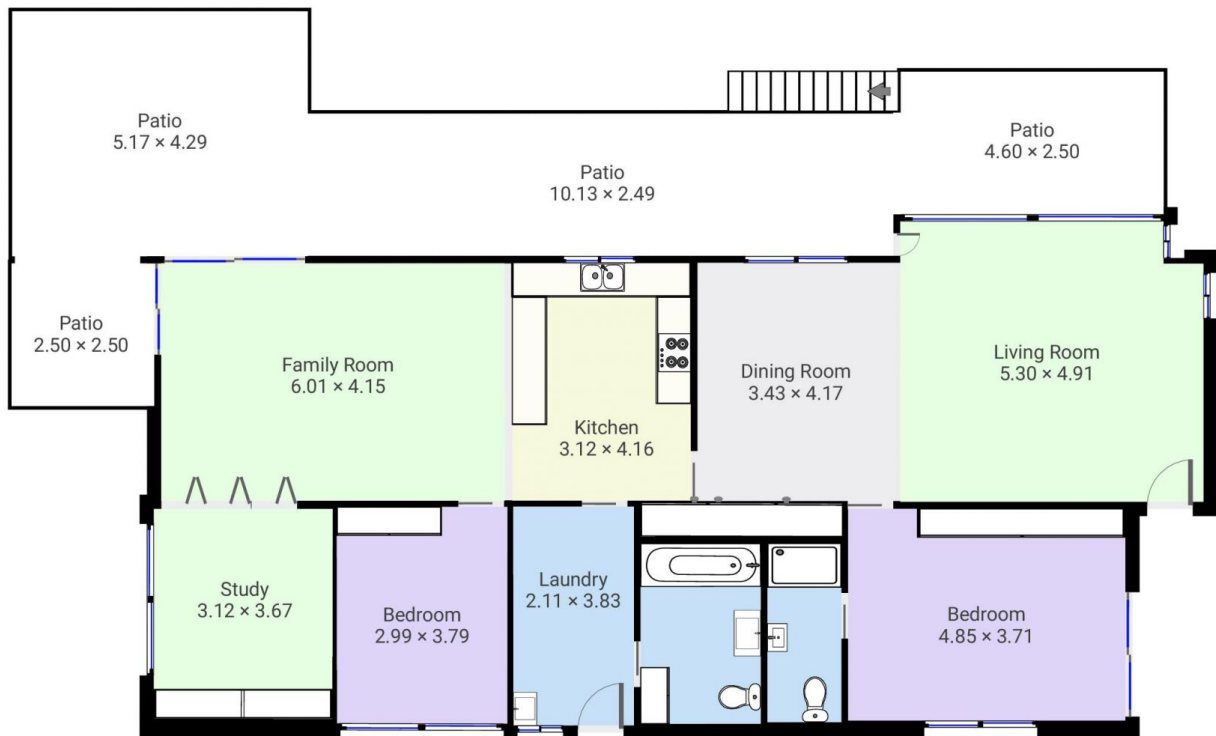


Silviya Saric
0260 561 888

▼ Basement



▼ Ground Floor



THIS FLOORPLAN IS PROVIDED WITHOUT WARRANTY OF ANY KIND. SENSOPIA DISCLAIMS ANY WARRANTY INCLUDING, WITHOUT LIMITATION, SATISFACTORY QUALITY OR ACCURACY OF DIMENSIONS.