



1/22 Campbell Avenue Wodonga VIC

2 1 1

With its own setback street frontage, large secure backyard and no body corporate/strata fees, this neatly presented unit combines features like a house.

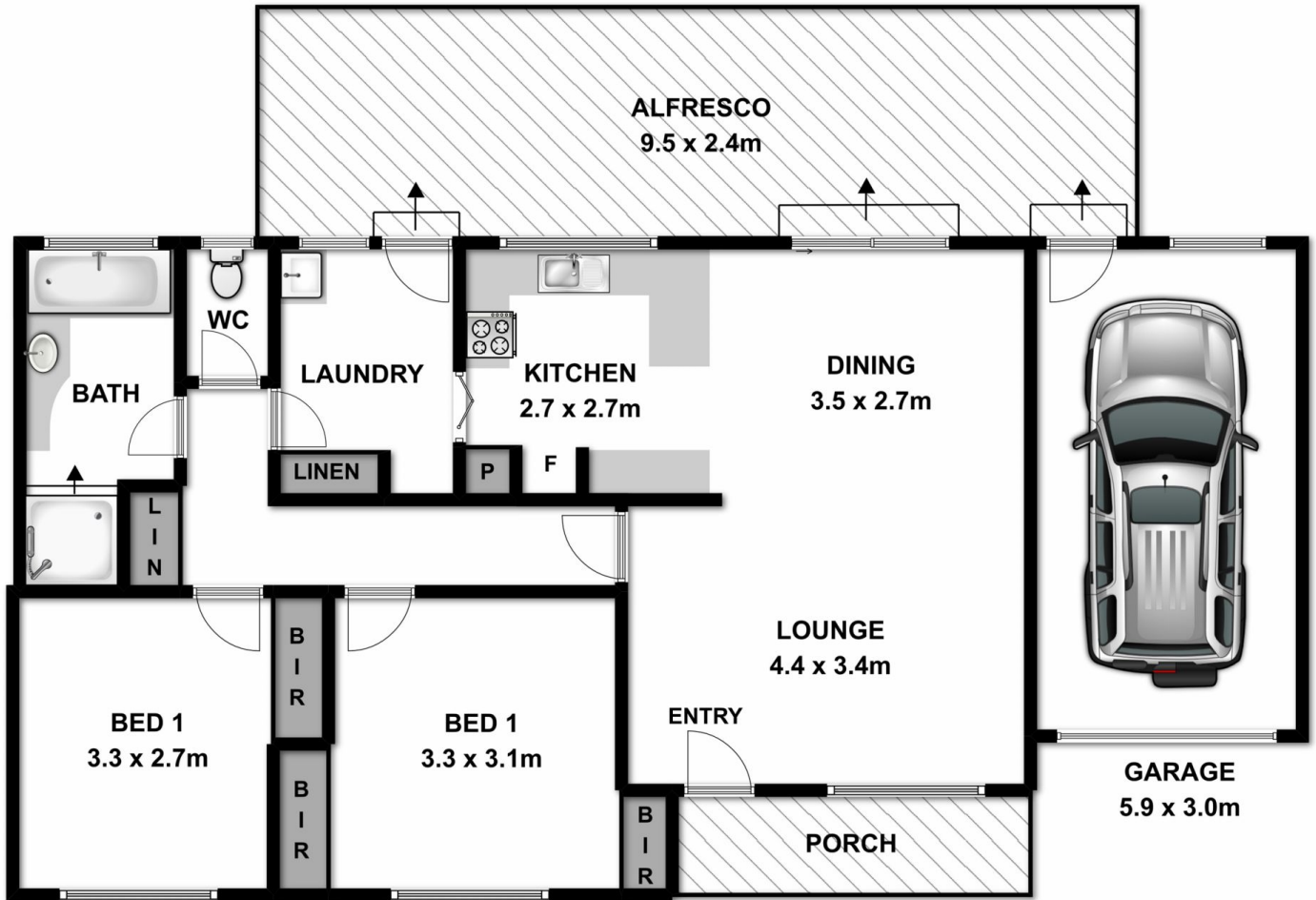
Appealing to buyers from all walks of life the many quality features include-

- * Gas kitchen combining a spacious light filled open plan living
 - * Comforts of gas wall furnace and split system cooling
 - * Inviting paved outdoor entertaining area
 - * For investors expected rental return of \$270 to \$290 per week
 - * Popular West Wodonga location with easy access to schools, shops, University/Tafe, golf course, freeway & more
- Long settlement preferred

Price : \$ 259,000
Land Size : 234 sqm
View : <https://www.wodongarealestate.com.au/sale/vic/north-eastern/wodonga/residential/townhouse/6432249>



Clinton Harvey
0260 561 888



Measurements are approximate. Not to scale. For illustrative purposes only.