



**wodonga real estate**  
**bestagents**



**27 Belgrade Avenue Wodonga VIC**

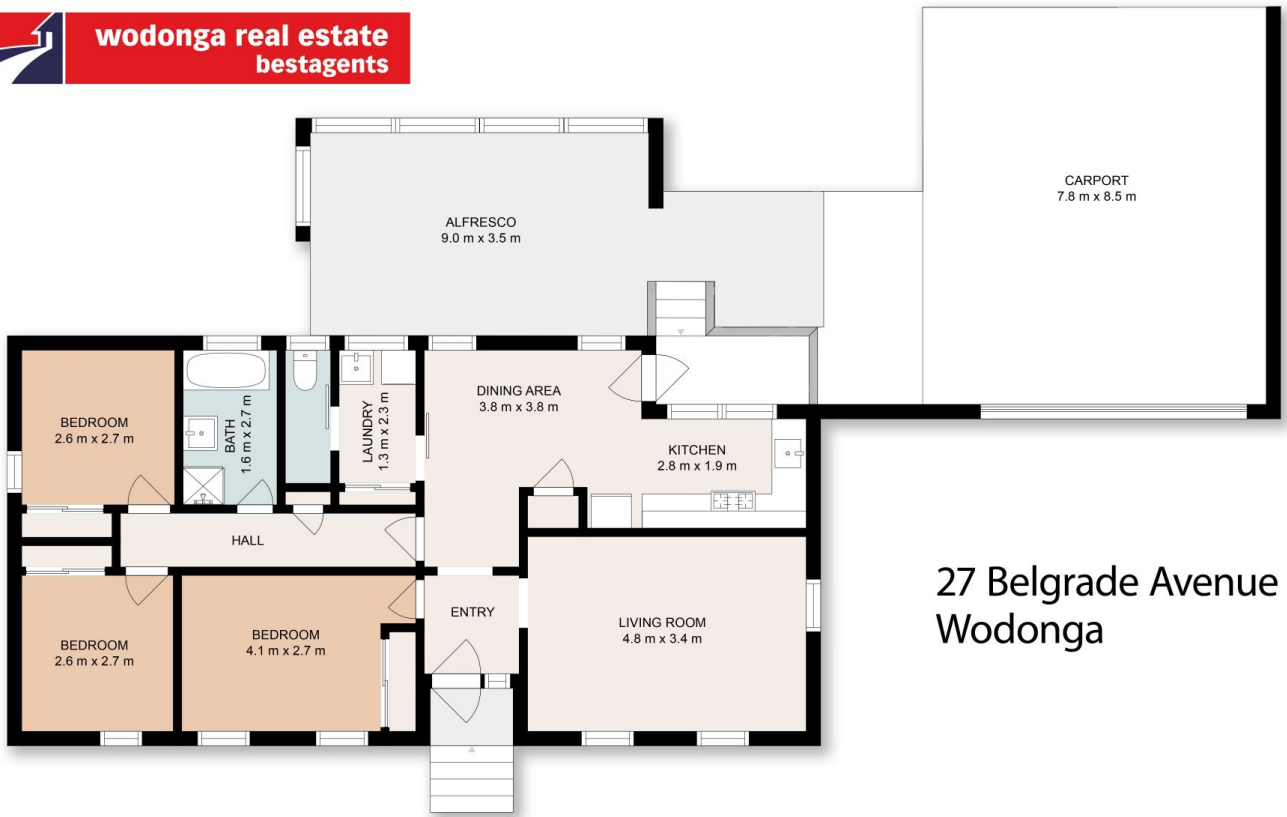
3 1 2

Brick by brick this affordable home has been beautifully transformed to today's modern levels. Comprising three bedrooms with built in robes, sparkling kitchen and bathroom, large north facing lounge, comforts of gas wall furnace and evaporative cooling, pattern paved outdoor entertaining area, secure double car accommodation, potential vehicle side access to a very neat low maintenance 566m<sup>2</sup> allotment, surrounded by excellent neighbours and located within easy access to schools, shops, transport and more. For investors expected rental return of \$380-400 per week

**Price** : \$ 439,000  
**Land Size** : 566 sqm  
**View** : <https://www.wodongarealestate.com.au/sale/vic/north-eastern/wodonga/residential/house/6933377>



**Clinton Harvey**  
**0260 561 888**



27 Belgrade Avenue  
Wodonga

This floor plan including dimensions are approximate and are for illustrative purposes only and should be used purely as a guide. No guarantee can be given to accuracy of the information contained, and interested parties should conduct their own enquires.