

9 Dickson Court Chiltern VIC

3 1 1

This charming traditional red brick home set on an impressive 1212m² (approx.) allotment, situated on the cusp of central Chiltern and only a short commute to Albury/Wodonga gives you the best of both worlds.

Featuring three good sized bedrooms with the option of turning the study into a forth. An open plan living and dining connected to the kitchen, a new newly renovated family bathroom including a spa and a separate second toilet.

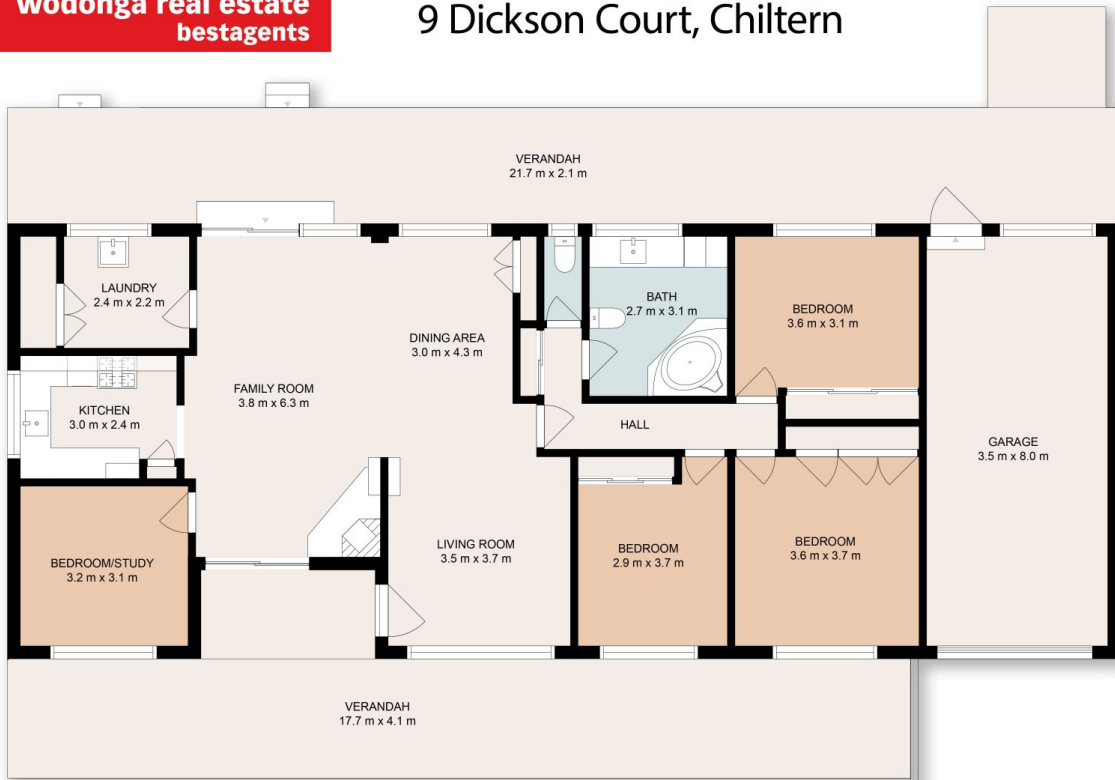
This home offers comfort all year round with ducted heating and boxed air conditioning and a well-kept rustic woodfire located in the centre of the home.

Outside consists of manicured surrounds, spacious lawns with plenty of room for a shed, rear access via double gates and open fields behind which has horses. No

Price : \$ 404,000
Land Size : 1212 sqm
View : <https://www.wodongarealestate.com.au/sale/vic/north-eastern/chiltern/residential/house/7066324>



Clint Ilsley
0260 561 888



This floor plan including dimensions are approximate and are for illustrative purposes only and should be used purely as a guide. No guarantee can be given to accuracy of the information contained, and interested parties should conduct their own enquires.