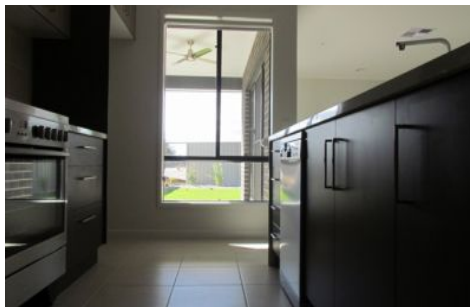




**wodonga real estate  
bestagents**



### 15 Gurney Crescent Wodonga VIC

4 2 2

\*\*\*UNDER APPLICATION\*\*\*

This modern inspired four bedroom, two bathroom home is positioned close to the town centre of Whitebox Rise. It's close proximity to schools, medical facilities, parks, walking tracks and the Waves Aquatic Centre, all contribute to its premier location. The well equipped, contemporary kitchen with walk in pantry, 900mm cooktop/oven and dishwasher, overlooks an expansive open plan dining and living room. Whilst the living room overlooks a covered pergola. Fully ducted heating and cooling feature throughout. Whilst the fully secure, rear yard houses a garden shed. The double lock up, remote garage boasts extensive storage and internal access. This stunning property would suit a family, professionals or retirees who are looking for a residence that is a cut above the rest.

**View** : <https://www.wodongarealestate.com.au/lease/vic/north-eastern/wodonga/residential/house/7175444>



**Meagan Fisher-Smith**  
0260 561 888