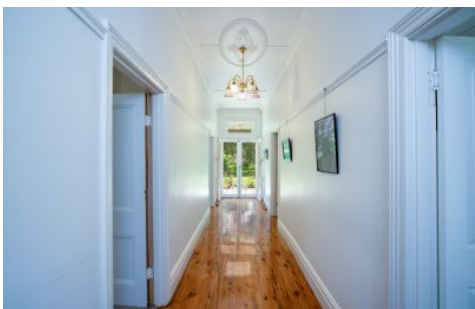




**wodonga real estate
bestagents**



1440 Murray River Road Talgarno VIC

4 **2** **2**

This established and well-maintained north-facing property is a once-in-a-lifetime dream - and it could be yours. Situated so close to the Hume Weir on approximately five acres and only 30 minutes from Albury/Wodonga, this home offers four bedrooms plus a study, and a covered veranda wrapping around the front and two sides of the homestead.

The front entrance is grand with spectacular plasterwork on the ceilings through out the home capturing beautiful period ceiling roses and ornate cornices, as well as gorgeous polished and sealed Murray Pine floorboards flowing throughout.

The bedrooms all have ceiling fans and the master a split system as well for additional comfort.

Large formal lounge with fireplace and mantle leads into a spacious dining room with fireplace and split system.

Open plan kitchen with another split system and electric

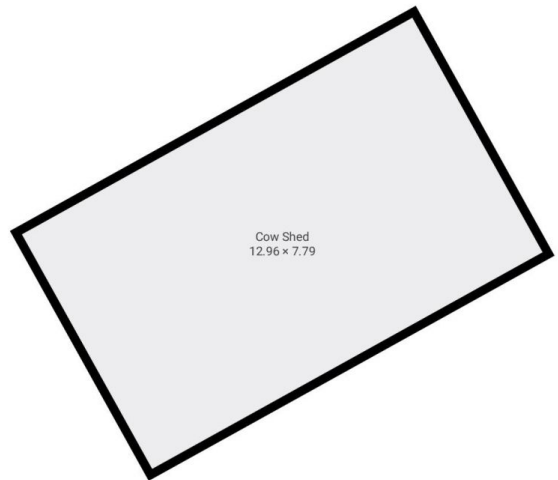
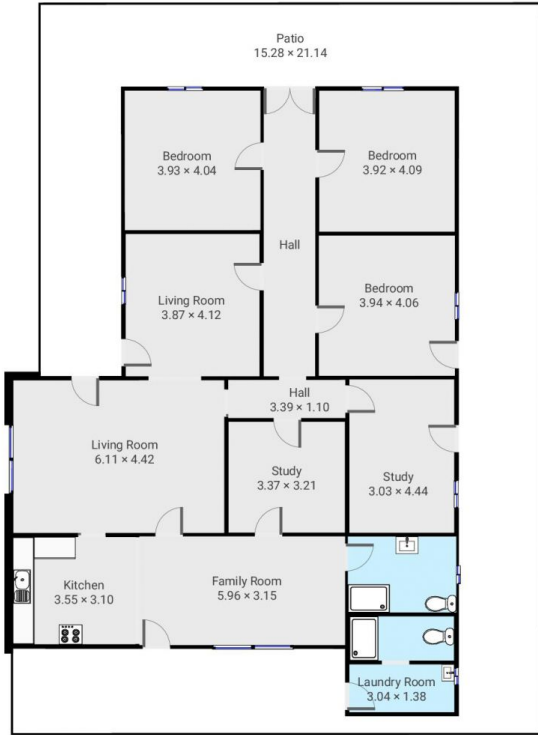
Land Size : 2.31 ha

View : <https://www.wodongarealestate.com.au/sale/vic/north-eastern/talgarno/residential/rural/7248832>



Silviya Saric
0260 561 888

<https://www.wodongarealestate.com.au>



THIS FLOORPLAN IS PROVIDED WITHOUT WARRANTY OF ANY KIND. SENSOPIA DISCLAIMS ANY WARRANTY INCLUDING, WITHOUT LIMITATION, SATISFACTORY QUALITY OR ACCURACY OF DIMENSIONS.